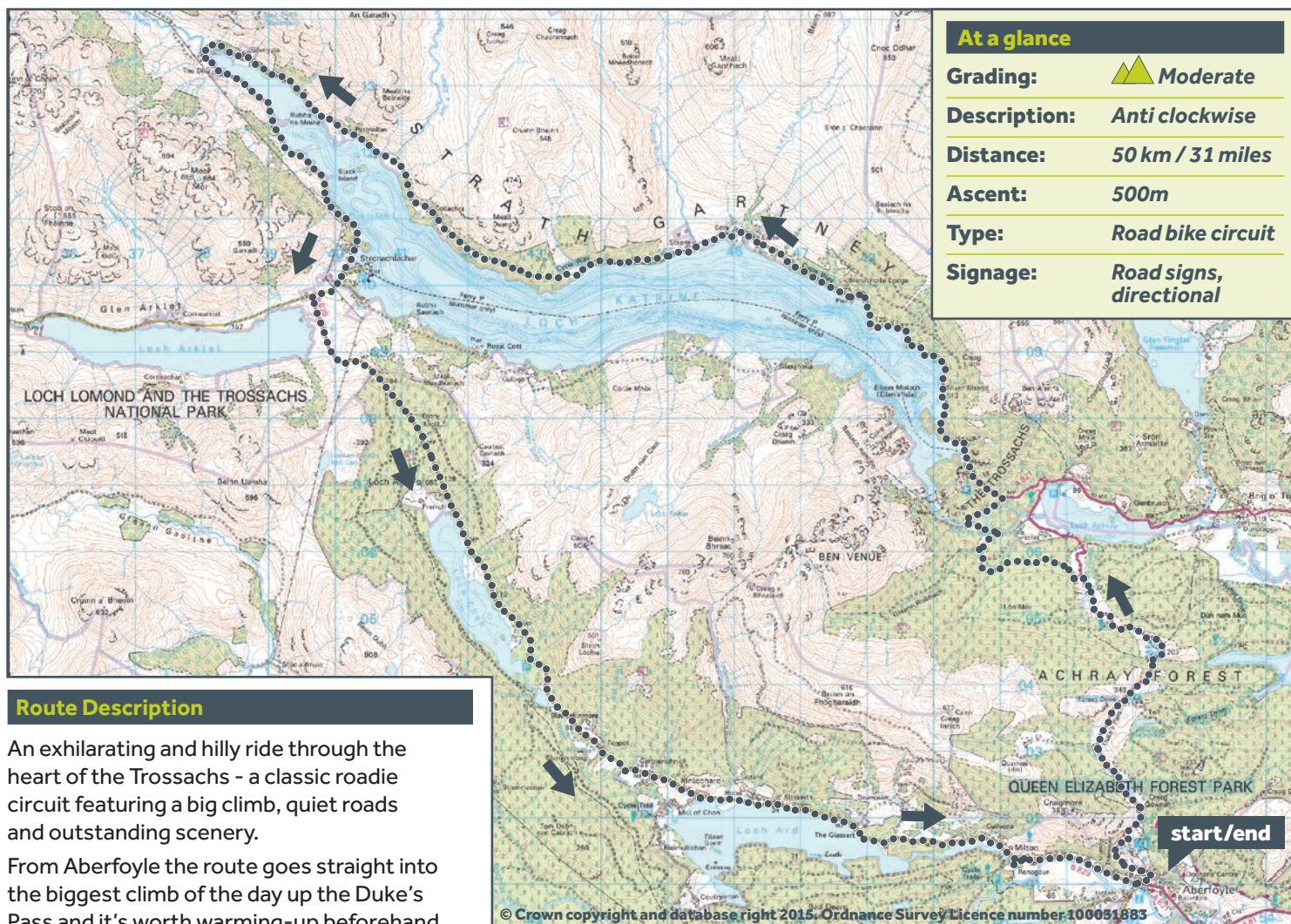


# Tour of the Trossachs



<b>At a glance</b>	
<b>Grading:</b>	Moderate
<b>Description:</b>	Anti clockwise
<b>Distance:</b>	50 km / 31 miles
<b>Ascent:</b>	500m
<b>Type:</b>	Road bike circuit
<b>Signage:</b>	Road signs, directional

## Route Description

An exhilarating and hilly ride through the heart of the Trossachs - a classic roadie circuit featuring a big climb, quiet roads and outstanding scenery.

From Aberfoyle the route goes straight into the biggest climb of the day up the Duke's Pass and it's worth warming-up beforehand - it's 3.8km long and a tough challenge with gradients fluctuating between 6-11% and numerous sharp ramps.

Once you have dispatched the climb, the route enters a beautiful area reminiscent of high alpine pasture with roadside crags and forested horizons. Descend to Loch Achray via a glorious series of sinuous, twisting bends to a junction at the A821 - turn left for Loch Katrine.

From the pier area, follow the loch shore for the next 21km through a wondrous (and largely traffic-free) landscape until the cafe at Stronachlachar. The route now heads uphill to a junction with Lochard Road (B829) - turn left to pass the picturesque Loch Arklet. The next 18km contains the odd short climb, but it's mostly an enjoyable cruise back to Aberfoyle via Loch Chon and Loch Ard.

For families or cyclists wanting a shorter ride, a cruise boat service operates from Trossachs Pier to Stronachlachar - providing a popular opportunity to cycle on the shore road and experience the loch from the water.

## Points of Interest

- Aberfoyle walks and picnic areas
- Queen Elizabeth Forest: The Lodge visitor centre, Go Ape, forest cycle paths, sculpture trail
- Loch Achray & Loch Ard forests
- Duke's Pass and Three Lochs Forest Drive
- The Great Trossachs Forest Path - Long Distance Route
- Loch Katrine, Loch Arklet, Loch Ard and Loch Chon
- Ben Venue
- Sailing on the SS Sir Walter Scott Steamship from Trossachs Pier and Stronachlachar

## Facilities

Refreshments are available on route at; Brenachoile Cafe (Loch Katrine Pier) and The Pier Cafe, Stronachlachar. Aberfoyle is well served with cafes, accommodation and a supermarket.

## Cycle Hire

**Katrine wheelz**  
 Trossachs Pier, Loch Katrine, By Callander, Stirling FK17 8HZ.  
 T: 01877 376366  
 E: mark@wheelscylingcentre.com  
 W: www.katrinewheelz.co.uk