

Loch Lomond & The Trossachs National Park



Camping Management: Developing New Approaches

Camping



Fires



Parking



Informal Camping in the Park

National Park Camping Pressures 2013

Levels of Informal Use

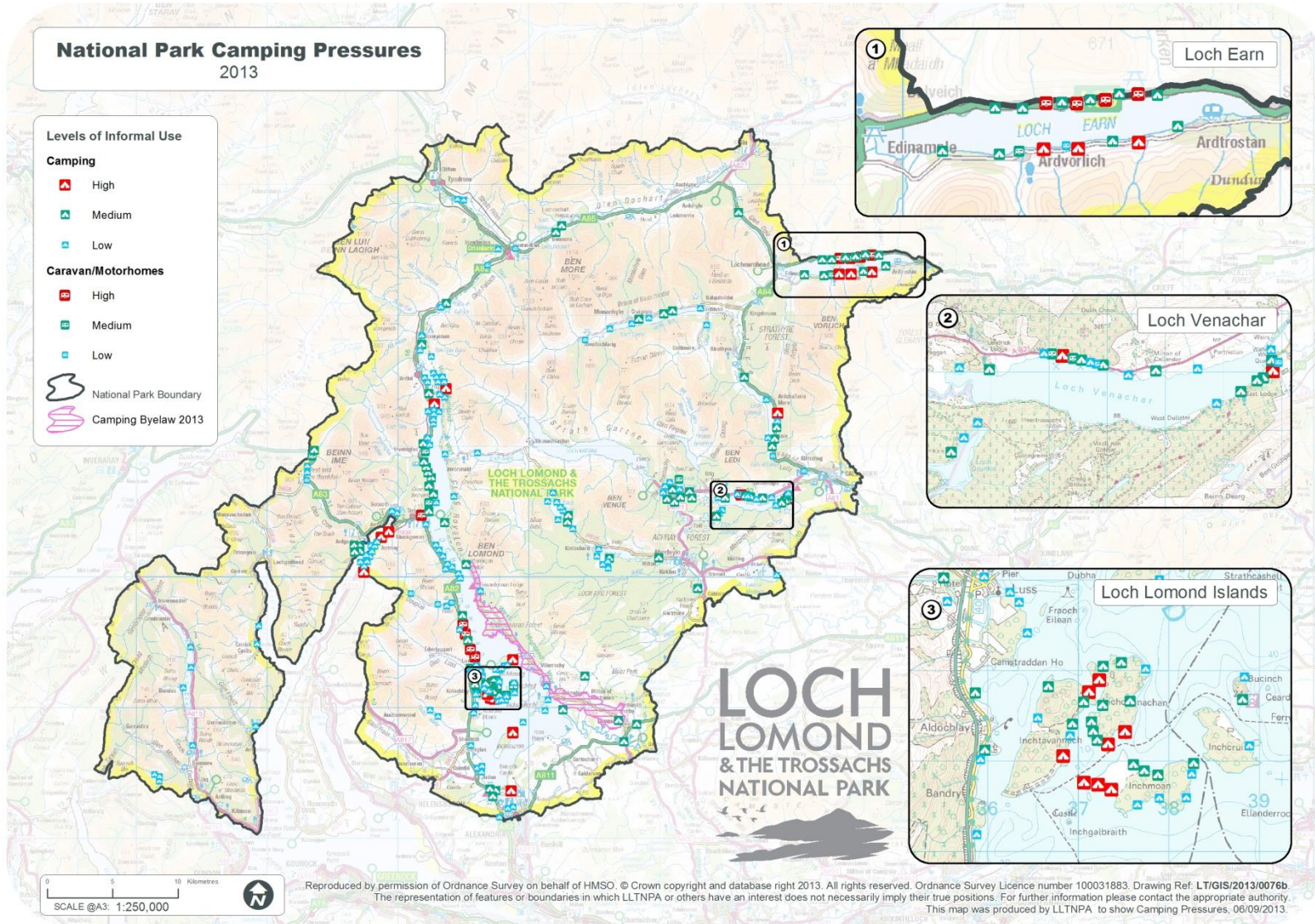
Camping

- High
- Medium
- Low

Caravan/Motorhomes

- High
- Medium
- Low

- National Park Boundary
- Camping Byelaw 2013



What we have done to date?

| | |
|------|--|
| 2008 | Operation Ironworks launched |
| 2009 | ELL Visitor Management Plan New Ranger patrolling and rota introduced |
| 2010 | ELL camping byelaws consultations |
| 2011 | ELL camping byelaws introduced Alcohol byelaws introduced by SC Sallochy camping area opens 5 Lochs VMG established 5 Lochs VMP agreed |
| 2012 | Loch Lomond byelaws consultation inc islands Loch Lubnaig sites works start |
| 2013 | revised Loch Lomond byelaws introduced Loch Lubnaig sites re-open ELL camping byelaws review starts |

Visitor Management Zones

VISITOR MANAGEMENT ZONES

KEY

 National Park Boundary

NATIONAL PARK VISITOR HUB

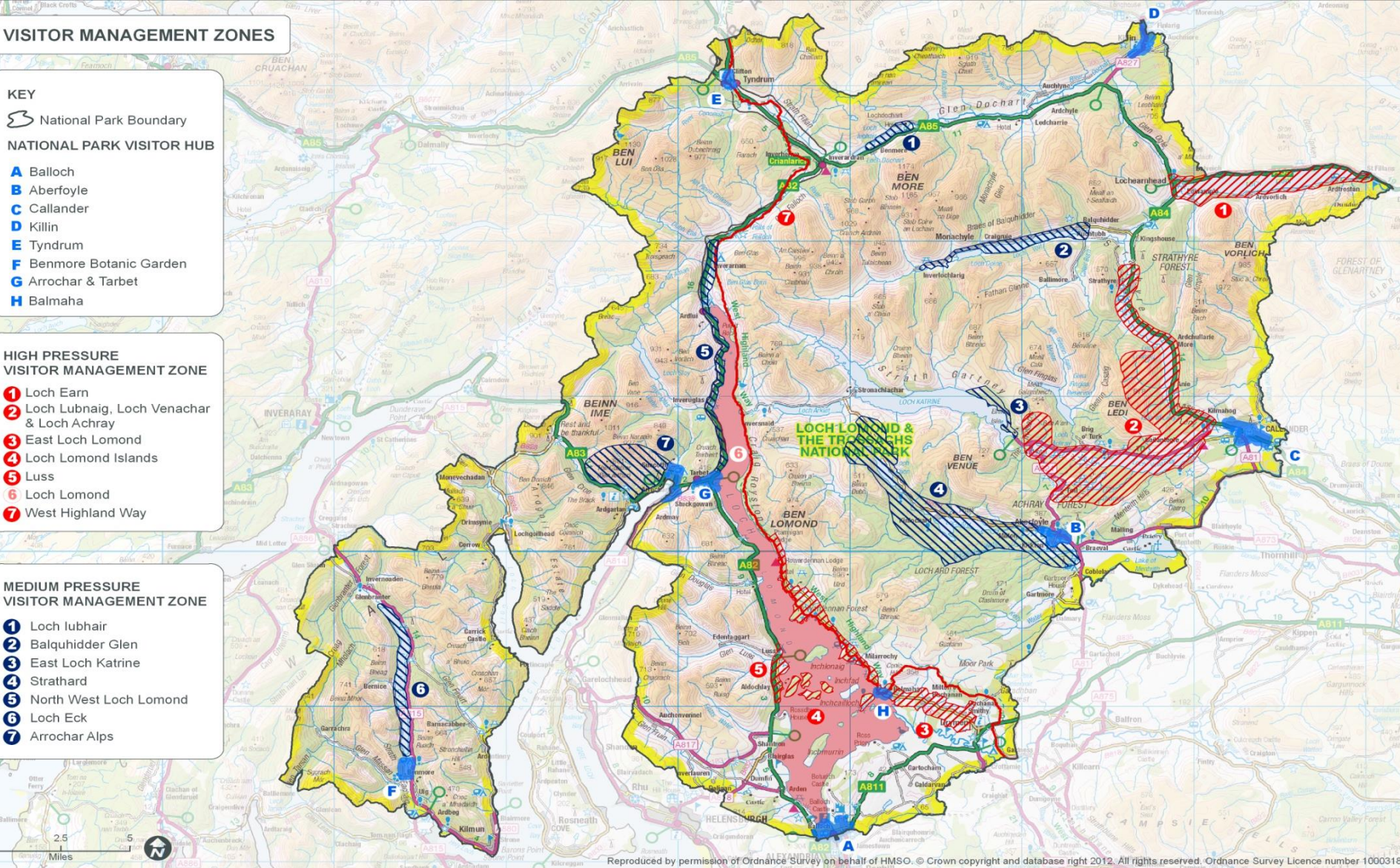
- A** Balloch
- B** Aberfoyle
- C** Callander
- D** Killin
- E** Tyndrum
- F** Benmore Botanic Garden
- G** Arrochar & Tarbet
- H** Balmaha

HIGH PRESSURE VISITOR MANAGEMENT ZONE

- 1** Loch Earn
- 2** Loch Lubnaig, Loch Venachar & Loch Achray
- 3** East Loch Lomond
- 4** Loch Lomond Islands
- 5** Luss
- 6** Loch Lomond
- 7** West Highland Way

MEDIUM PRESSURE VISITOR MANAGEMENT ZONE

- 1** Loch Lubhair
- 2** Balquhitter Glen
- 3** East Loch Katrine
- 4** Strathard
- 5** North West Loch Lomond
- 6** Loch Eck
- 7** Arrochar Alps



Next steps?

- Keep patrolling: rangers and police
- Develop infrastructure: shovel ready and capital budget
- Develop and improve our regulatory options:



National Park Byelaws?

What they might look like?

- **Flexible** in application: seasonal, time limited
- Regulate **range of activities**: camping, fires, parking...
- Tackle **irresponsible behavior**: litter, damage, disturbance...
- Across the Park: **zones and buffers**
- **Enforceable** by us and partners: Rangers, police, FCS...
- Allows for **controlled permitted use**: designated sites and permits within zones

Proposal

- To develop a proposals/options paper for Board consideration in October.
- If agreed in Oct to progress with informal consultations and final proposal paper to December Board.

LOCH
LOMOND
& THE TROSSACHS
NATIONAL PARK






Some options?



AREAS IN THE NATIONAL PARK WITHIN 250 METRES OF A ROADS, B ROADS AND MINOR ROADS

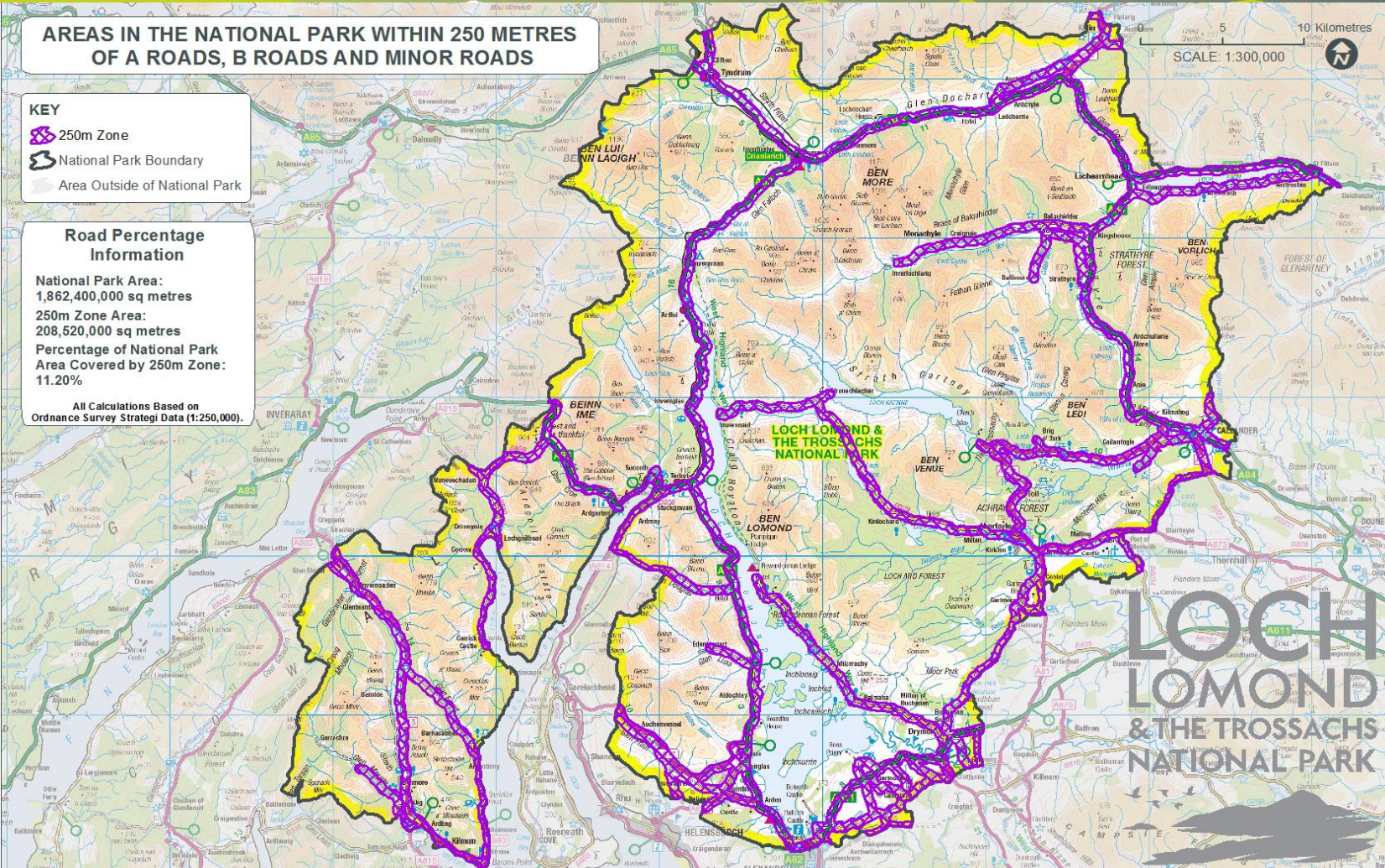
KEY

-  250m Zone
-  National Park Boundary
-  Area Outside of National Park

Road Percentage Information

National Park Area:
1,862,400,000 sq metres
250m Zone Area:
208,520,000 sq metres
Percentage of National Park
Area Covered by 250m Zone:
11.20%

All Calculations Based on
Ordnance Survey Strategi Data (1:250,000).



LOCH LOMOND & THE TROSSACHS NATIONAL PARK

The representation of features or boundaries in which LLNPA or others have an interest does not necessarily imply their true positions. For further information please contact the appropriate authority.