

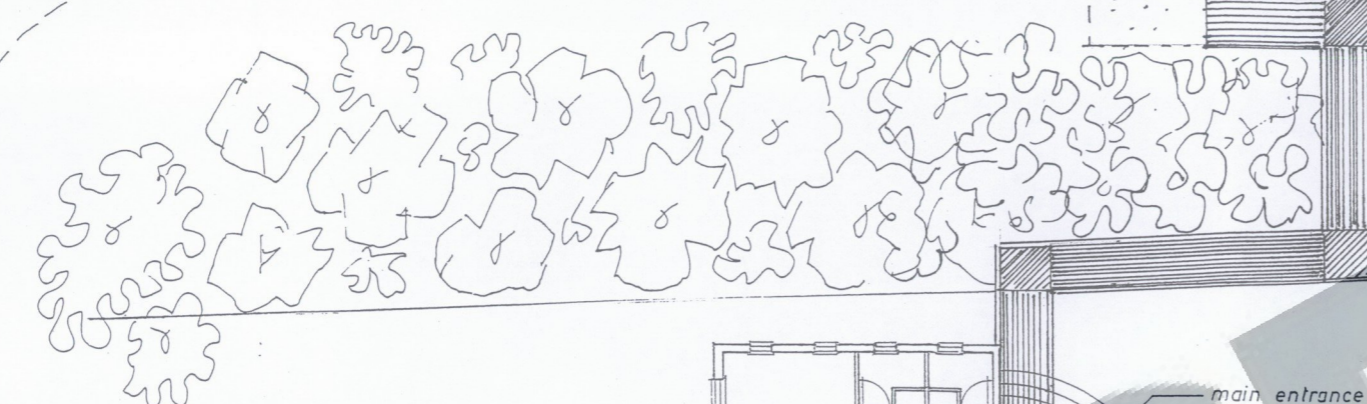
← GLENBRANTER

A 815

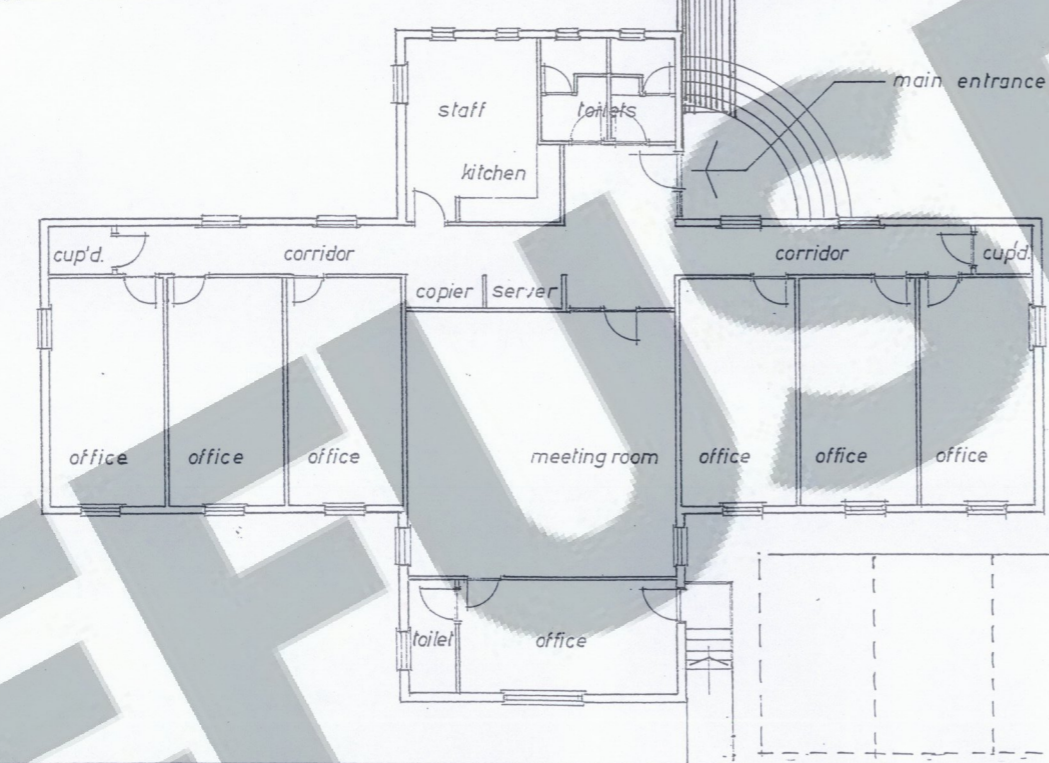
STRACHUR →

LOCH LOMOND & THE TROSSACHS NATIONAL PARK

existing access



Elevated pedestrian way (1200mm wide) leading from main entrance to the roadside verge of the A815. Pedestrian way to comprise timber decking on timber substructure supported by timber posts - protected both sides with ranch type balustrade - all complying with the current edition of the Building Standards Regulations



proposed car park

existing store for felled timber

new access road

existing lorry park

LOCH LOMOND AND THE TROSSACHS NATIONAL PARK
20 FEB 2017
HEADQUARTERS

PROVISION OF NEW/REPLACEMENT OFFICE ACCOMODATION	at --	P MCKERRAL & CO CAMPELLTOWN
OLD STRACHUR SAWMILL STRACHUR ARGYLL	for --	
PROPOSED SITE PLAN		
SCALE: 1/200		FEBRUARY 2017