

Vacant and Derelict Land audit 2019

The Vacant and Derelict Land audit is undertaken in accordance with the 2019 Vacant and Derelict Land guidance published by Scottish Government. This sets out a list of criteria that a site must meet in order to be classed as Vacant or Derelict:

<https://www2.gov.scot/Topics/Statistics/Browse/Planning/DataSupplierArea/SVDLSGuidance>

We have identified 10 Vacant and Derelict land sites within the National Park, of these 8 have been allocated for development within our Local Development plan (LDP). Updates on all our LDP sites can be found in our Action programme for which there is also an interactive map, here:

<https://www.lochlomond-trossachs.org/planning/planning-guidance/local-development-plan-action-programme/>

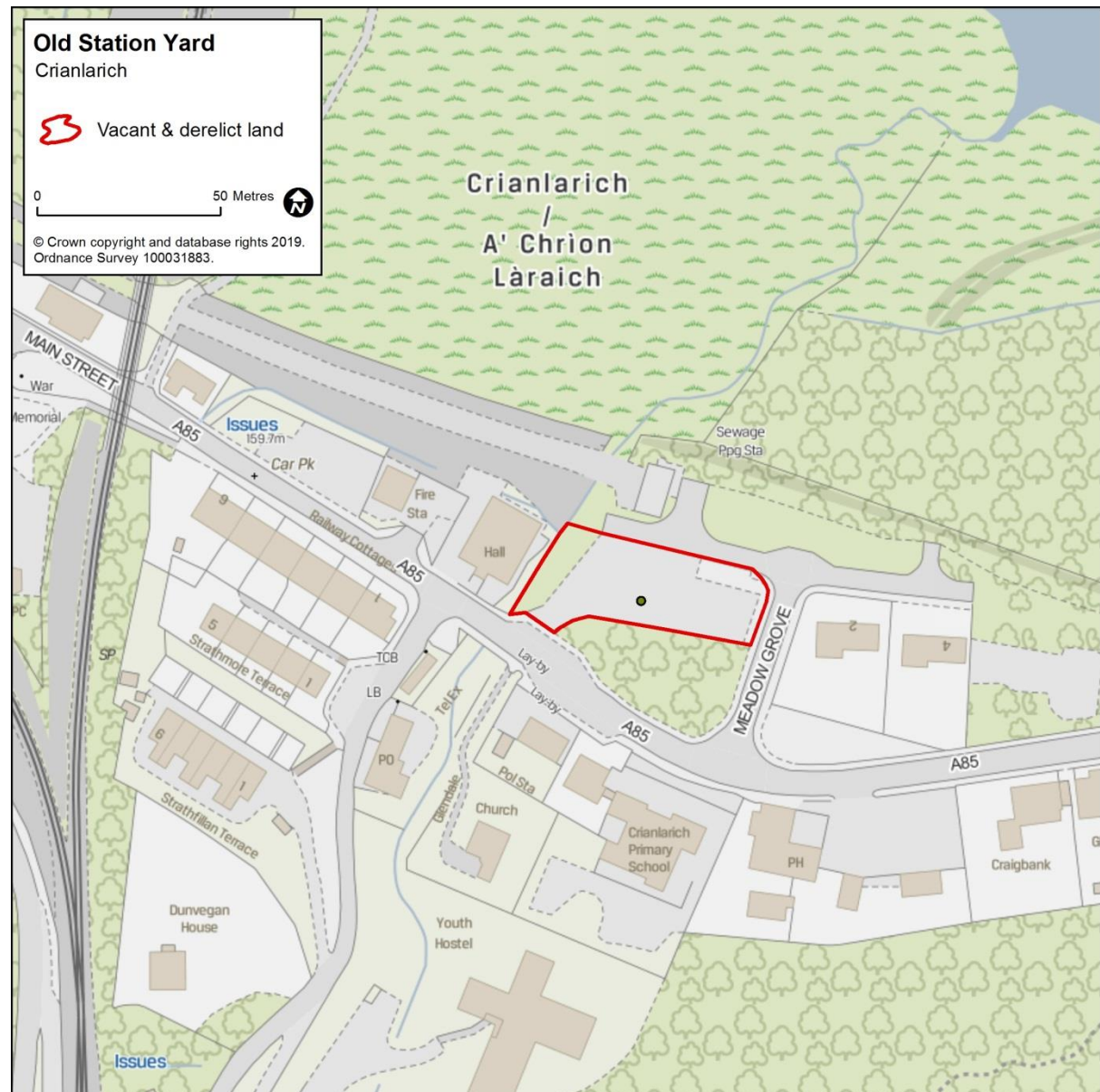
The site boundaries for Vacant and Derelict land may differ slightly from the allocation boundaries, as these have been drawn to match with the criteria set out in the Vacant and Derelict land guidance 2018. The audit will be reviewed on an annual basis and the sites listed may change.

Table 1 below lists all the Vacant and Derelict Land Sites identified in our audit 2019. The two rows **marked in yellow** are the only two that are not allocated in our Local Development Plan.

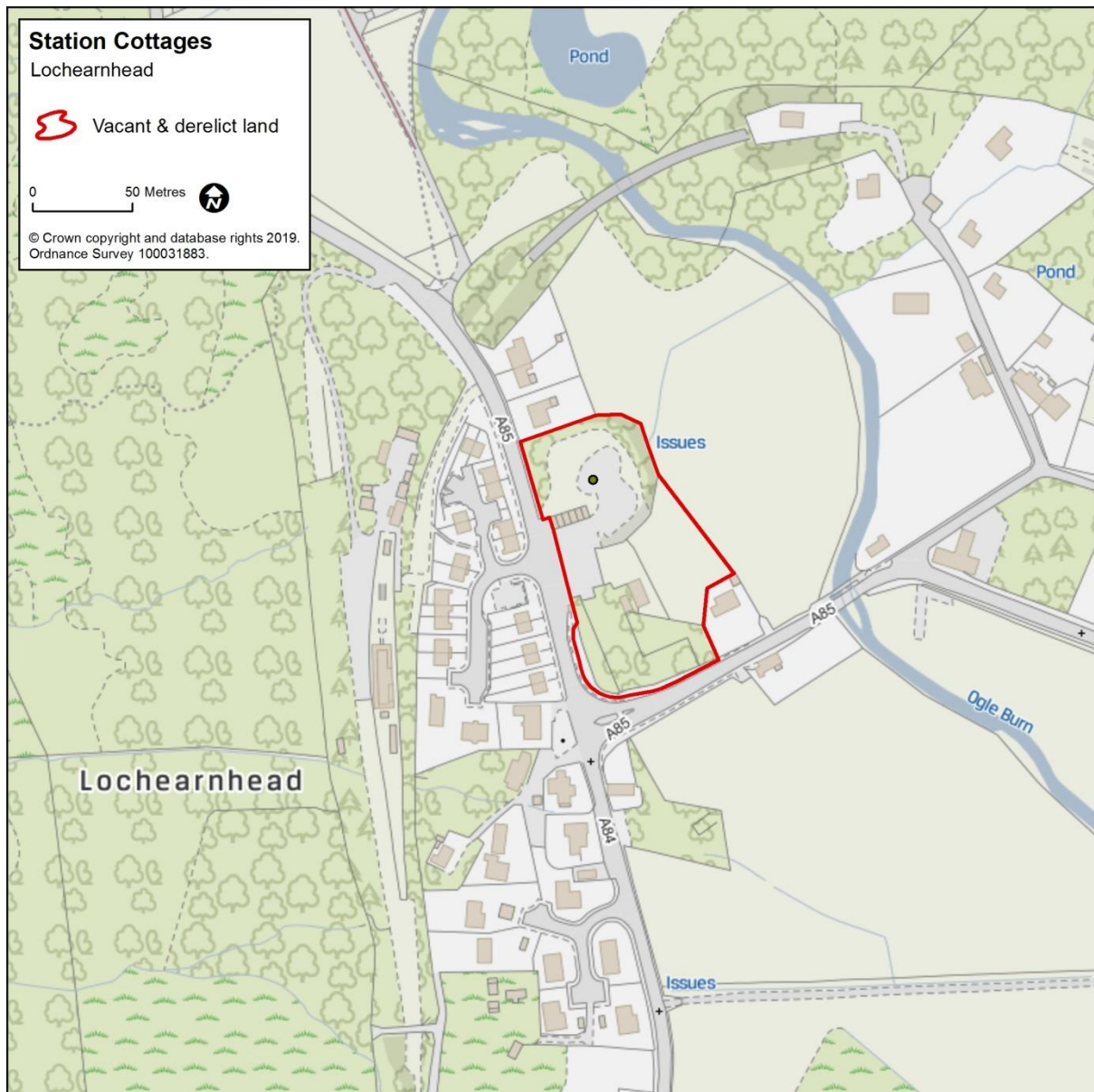
Table 1 - Vacant and Derelict Land Sites 2018

SITECODE	NAME
Crianlarich VD1	OLD STATION YARD (PART)
Lochearnhead MU1	STATION COTTAGES
Lochearnhead H1	HOLIDAY CENTRE
Carrick Castle H1	FORMER HOTEL SITE
Drymen MU1	SALMON LEAP
Arrochar VE1	FORMER TORPEDO RANGE
Tarbet VE1	TOURIST INFORMATION CENTRE SITE AND ADJOINING LAND
Tarbet VE3	FORMER HARVEYS GARAGE SITE
Balloch VE4	WOODBANK
Callander VD2	CALEDONIAN HOUSE

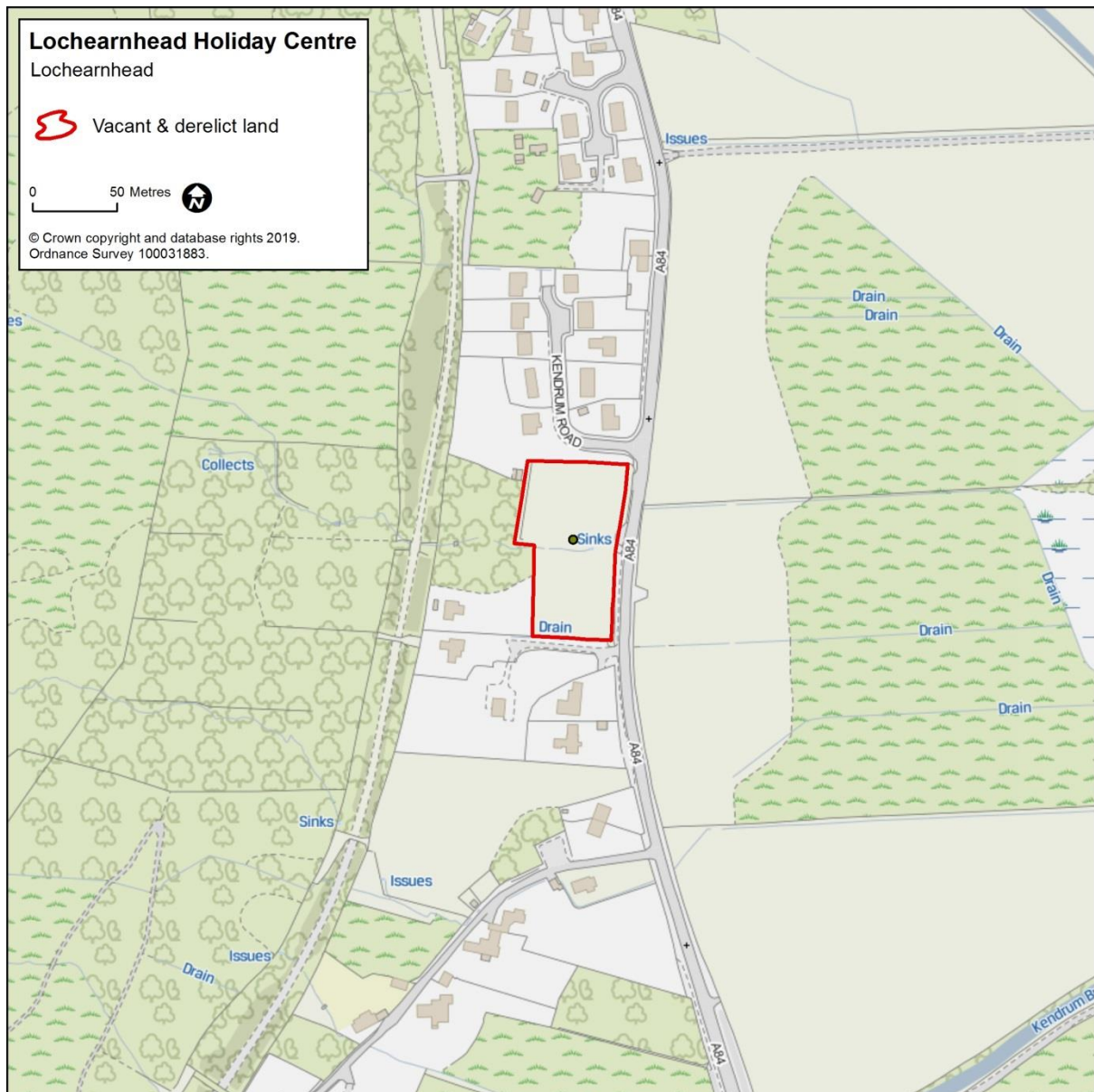
Crianlarich VD1



Lochearnhead MU1

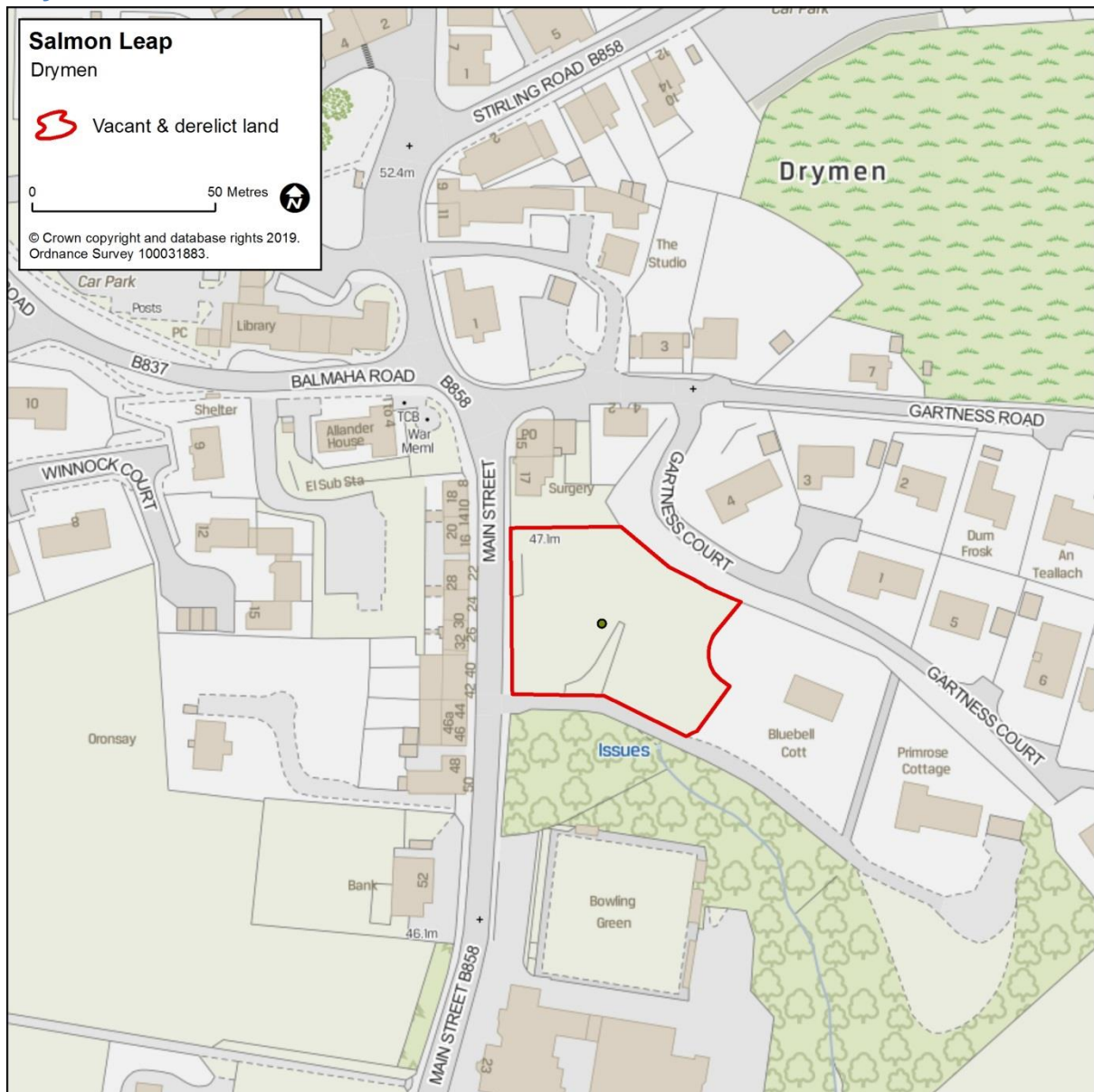


Lochearnhead H1

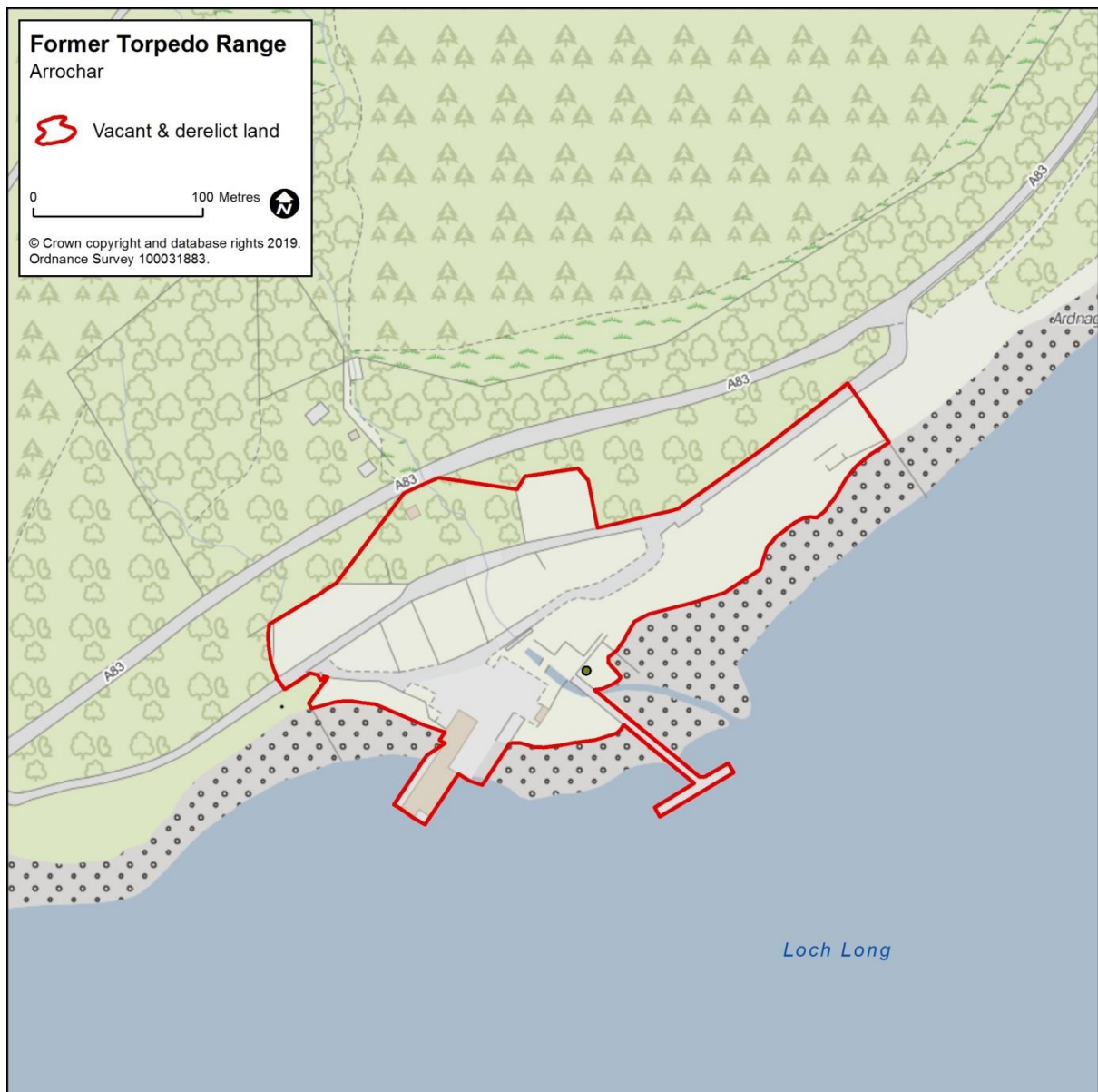


[illegible]

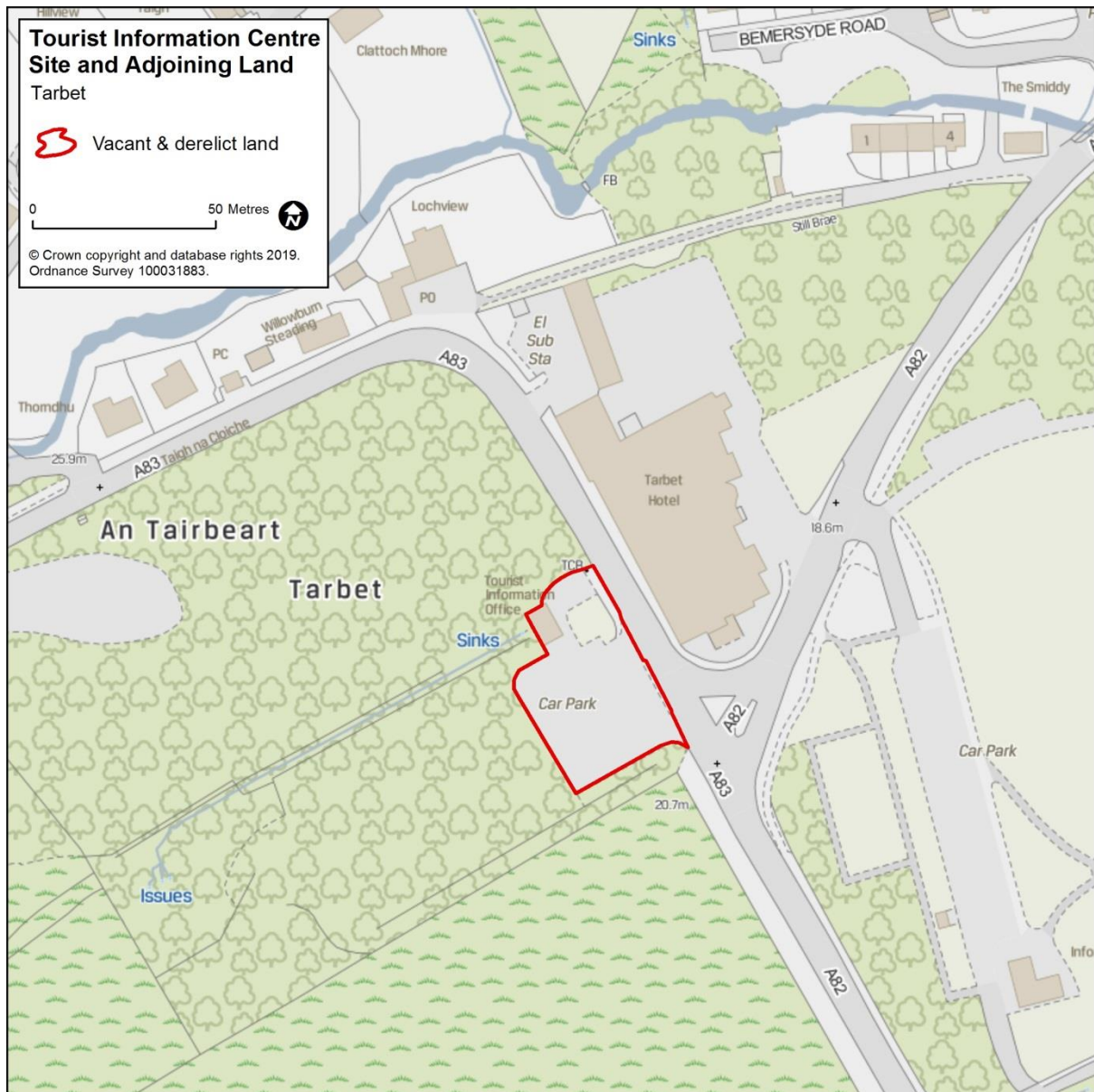
Drymen MU1



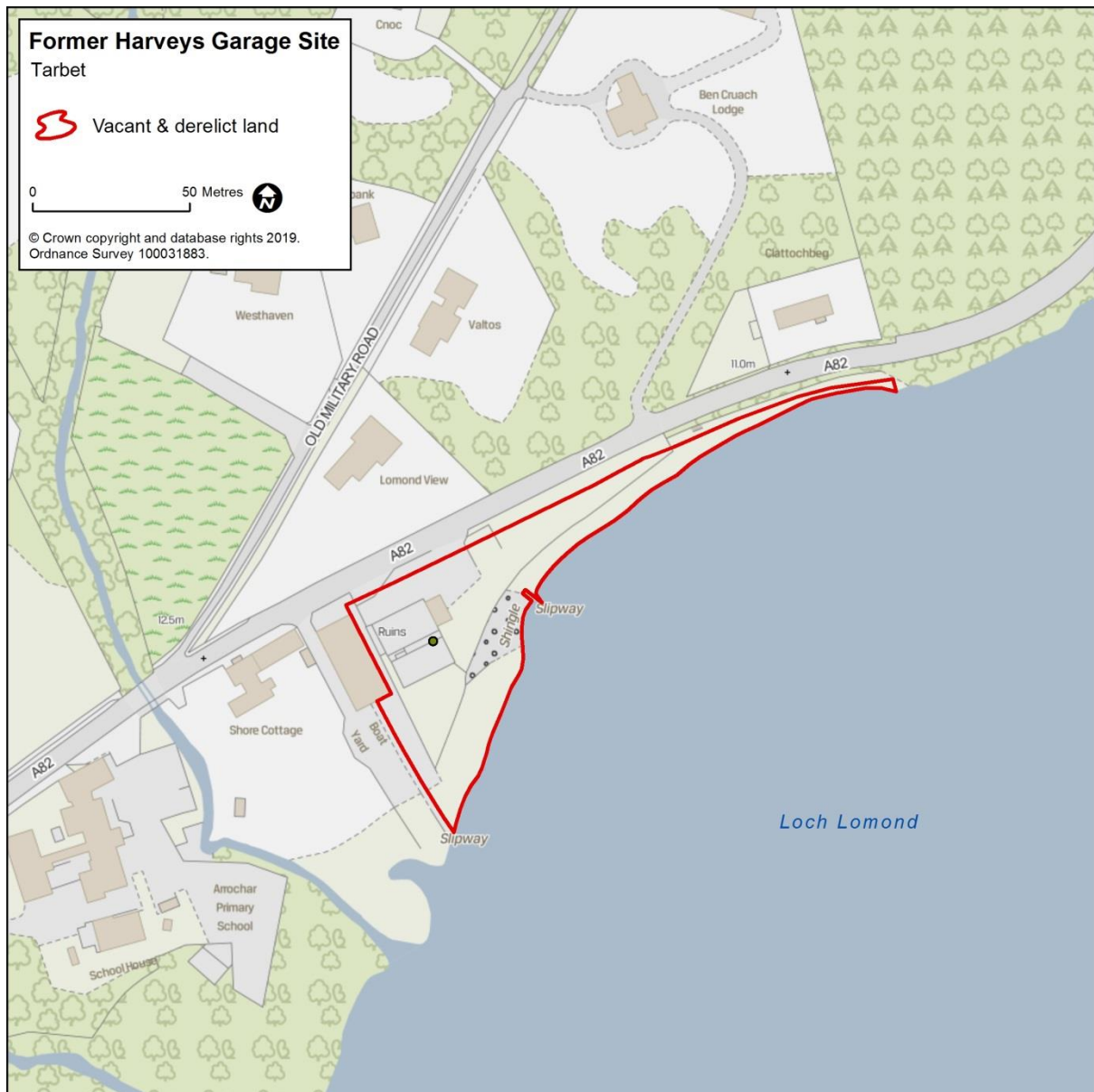
Arrochar VE1



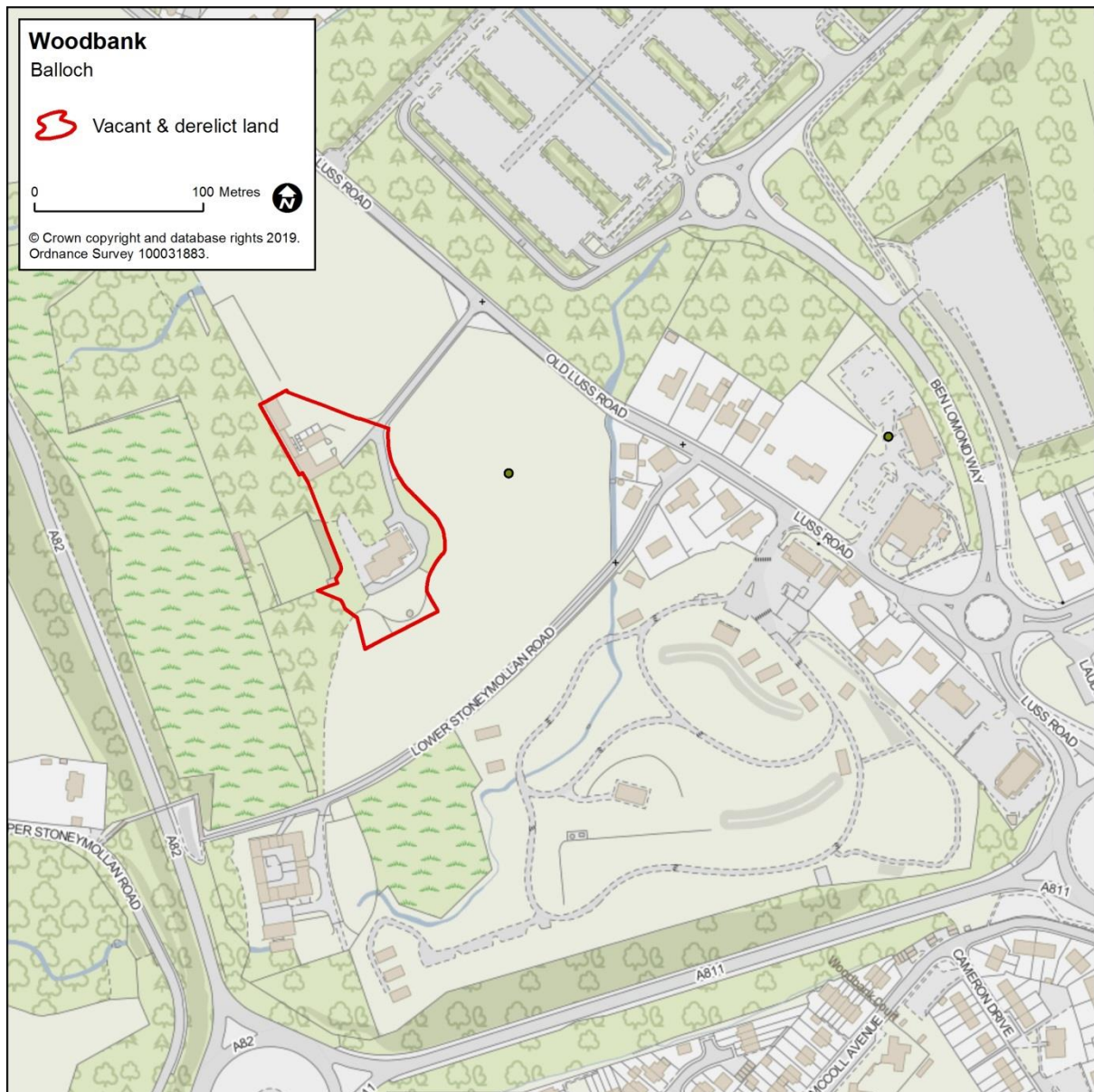
Tarbet VE1



Tarbet VE3



Balloch VE4



Callander VD2

