

Accessibility Guide Inveruglas Visitor Centre and Viewpoint

Table of Contents

Contact information.....	2
Welcome	2
At a Glance	2
Level Access	3
Visual.....	3
General.....	3
Getting Here.....	3
Travel by public transport.....	3
Parking	4
Arrival	5
Car Park to main entrance	5
Main entrance.....	5
Getting around inside.....	5
Visual Impairment - General Information	6
Main Visitor foyer.....	6
Public toilet	7
Unisex Accessible Toilet	7
Nearby facilities/amenities	7
An Caenn Mor Scenic View Point.....	7
Camping and Motorhome Permit Area.....	9
Customer care support	9
Emergency evacuation procedures.....	9

Contact information

Telephone: 01389 722 600

Website: www.lochlomond-trossachs.org

Email for accessibility enquiries: parkforall@lochlomond-trossachs.org

Welcome



The Facilities at Inveruglas are situated on one of Scotland's most famous freshwater lochs, Loch Lomond. Nestled upon its western shore the area's stunning landscape has been a lure to visitors for generations.

We are accessible for wheelchair users and can cater for anyone with other specific access requirements.

Please get in touch if you require any further information about specific access or need advice on planning your visit.

At a Glance

Level Access

There is level access from the main entrance to:

- Visitor/Interpretational information
- [café](#) – operated by third party
- Unisex Accessible Toilet

Visual

- Glass (incl., timber framed) doors and sky light windows in main entrance.
- Variability in contrast between the walls and the doors.
- Some parts of the venue have low lighting.

General

- [Toilets](#) are open from 8:30am – 8:00pm
- Check [The Den at Inveruglas](#) for café opening times

Getting Here

Inveruglas Visitors Centre

Arrochar

G83 7DW

Travel by public transport

- You can get to Inveruglas Visitor Centre by bus.
- The nearest bus stop is on the main A82 outside the Loch Sloy Power Station.
- The nearest train station is Tarbet. The train station is 3.5 miles / 5.6 km from Inveruglas Visitor Centre.
- Taxi companies with wheelchair accessible vehicles operate in the area but should be booked in advance. To access the attraction please ask to be dropped off at our front entrance.



Parking

- There is plentiful parking at the attraction, 3 of which are blue badge holder bays.
- There are Pay & Display machines in the car park.
- The surface from the car park to the entrance of the attraction is a mix of both tarmac and flagstones.
- There are two dropped kerbs from the car park to the front of the building with a 5mm lip.



Arrival

Car Park to main entrance

- From the car park to the main entrance, there is level access.
- The route is 1590mm wide, or more.

Main entrance

- The main entrance has reasonably level access, with a gentle slope in front of the main door.
- The main door opens outwards and is 820mm wide when fully open with a 40mm lip.
- Within the building all walk ways are level. The floor is made of slate flagstones, with natural light from two Velux roof windows and small windows by the main door. There are up and down lighters within the entrance.

Getting around inside

Visual Impairment - General Information

- There is some contrast markings on glass doors, between walls and doorframes.
- Some parts of the venue have low lighting.
- The Visitor Centre is housed all on the same (ground) level.

Main Visitor foyer

- From the main entrance around this area, there is level access, with interpretational panels and leaflets, to the toilets and café area.
- The route around exhibits is 3000mm wide, or more. Generally, display information is low, and at suitable height for wheelchair users.



Public toilet

Unisex Accessible Toilet

- There is a public toilet for disabled visitors.
- From the main entrance to the public toilet, there is level access. The approach is 3000mm wide. The toilet door is 790mm wide.
- There is 1180mm in front of the toilet. The toilet seat is 490mm high.
- There is a horizontal grab rail located to the right of the toilet, vertical grab rails in front to the right & and a pull down, locking grab rail. There is an emergency pull cord to the left of the toilet.
- There are baby changing facilities within this toilet.
- There are separate male & female public toilets immediately adjacent.

Nearby facilities/amenities

An Caenn Mor Scenic View Point

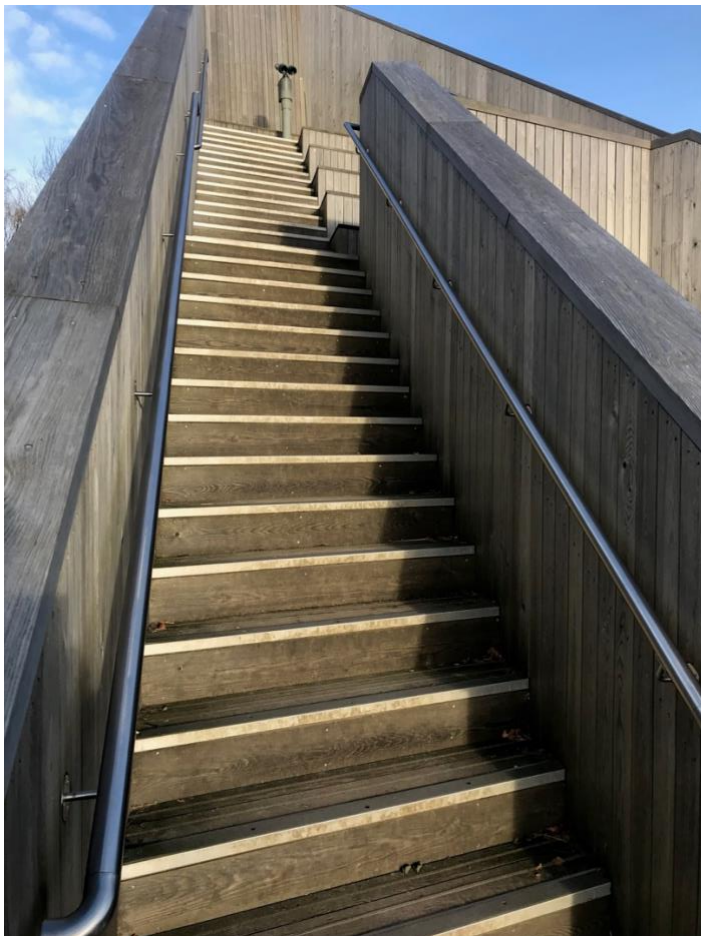


- From the main entrance to the viewpoint, there is gently sloping uphill access.
- Access can also be gained to the left of the building along flagstone, then finely compacted footpath 1400mm wide.
- The viewpoint is 126m from the Visitor Centre.

- The Viewpoint structure has an entrance of 1160mm with a 30mm lip and provides spectacular views of Loch Lomond from this level.
- There are 31 steps to the higher part of the viewpoint. The width of the steps are 1000mm, height of step is 175mm and depth 250mm.



Route signage from the Visitor Centre to An Ceann Mor



Steps to View Point on An Caenn Mor

Camping and Motorhome Permit Area

There are 4 motorhome permit points in the north car park. [Permits can be obtained in advance online.](#)

The area is a mix of sealed surface (tarmac) and compacted stone. There is level access across the car park to the visitor facility.

From the North car park to the camping permit area there is a loose chipped stone path with a maximum width of 750mm. There are step obstacles and boulders to access the beach where tents are permitted. In addition in the woodland area there are trip hazards, Camping at Firkin Point A may be more accessible.

Customer care support

- We welcome assistance dogs. Please ask staff for assistance.
- Please contact parkforall@lochlomond-trossachs.org with any enquiries.

Emergency evacuation procedures

- Emergency evacuation procedures in place when café is operational is onsite.
- In the case of an evacuation, all customers inside the café will be led to safety by Café staff

Guide last updated: 03/05/2019