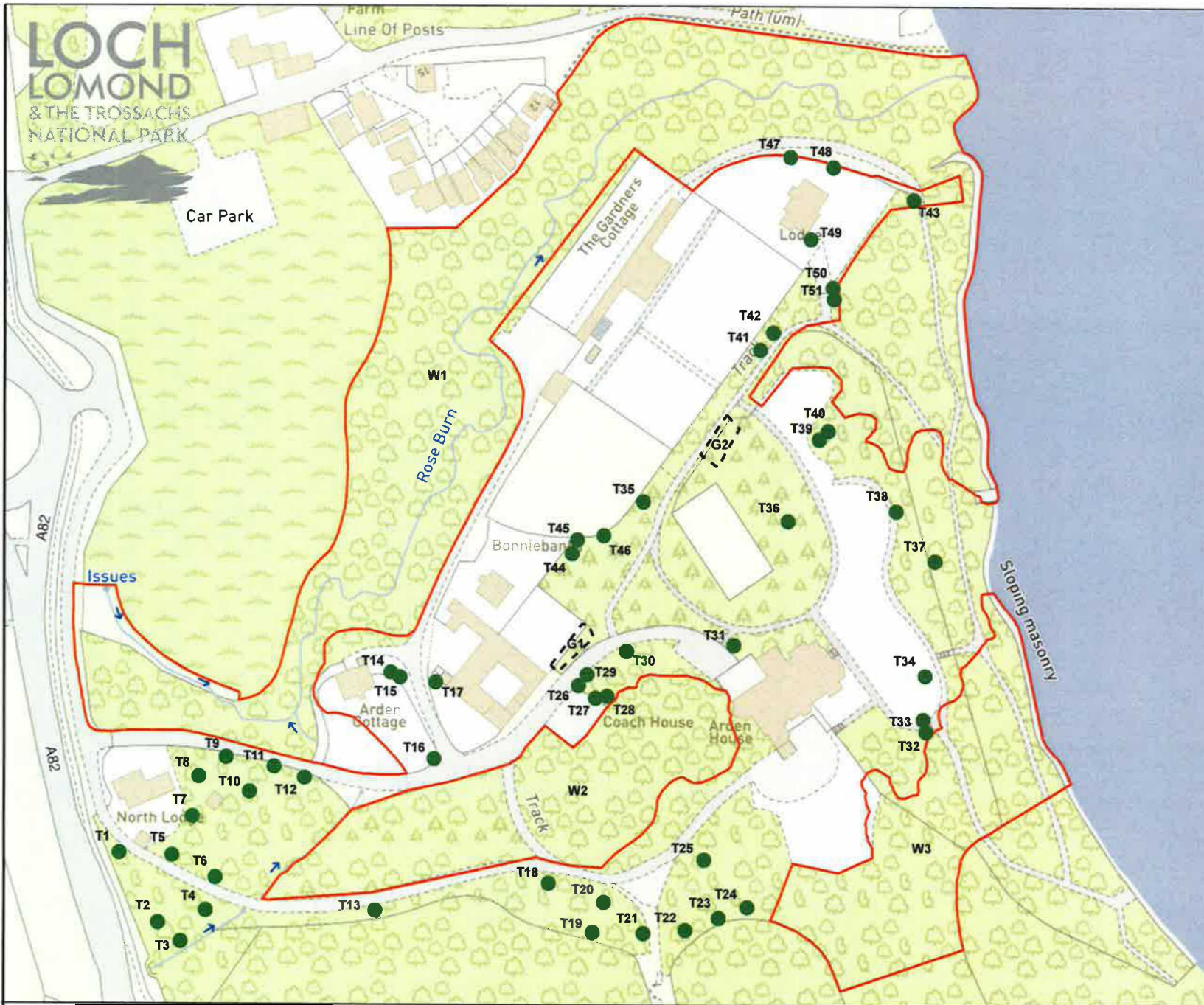


LOCH LOMOND & THE TROSSACHS NATIONAL PARK



Town & Country Planning
(Scotland Act) 1997
Section 160
Tree Preservation Order

Arden Policies,
Arden
Plan 1

KEY

- Protected Tree
- ⋮ Protected Group of Trees
- ▭ Protected Woodlands

Individual Tree(s) protected by TPO

- T1 - Juniper
- T3, T11 - Horse Chestnut
- T4 - Sycamore
- T5 - Copper Beech
- T2, T6, T13, T18, T20, T30, T32-T34, T38, T42, T43, T46, T47 - Oak
- T7-T10, T12, T25 - Lime
- T14 - Holly
- T15, T16 - Beech
- T17 - Birch
- T19 - Poplar
- T21 - Dawn Redwood
- T22, T44, T45, T48 - Yew
- T23, T39, T40, T50, T51 - Sweet Chestnut
- T24 - Larch
- T26, T35 - Giant Redwood
- T27 - Cypress
- T28, T36 - Douglas Fir
- T29 - Coastal Redwood
- T31 - Cedar
- T37 - Noble Fir
- T41, T49 - Japanese Maple

Group of Trees protected by TPO

- G1 - 3 Western Hemlock, 2 Holly
- G2 - 5 Birch

Woodland protected by TPO

- W1, W2, W3 - Mature woodland, predominantly broadleaved

