

SECTION 3

Place

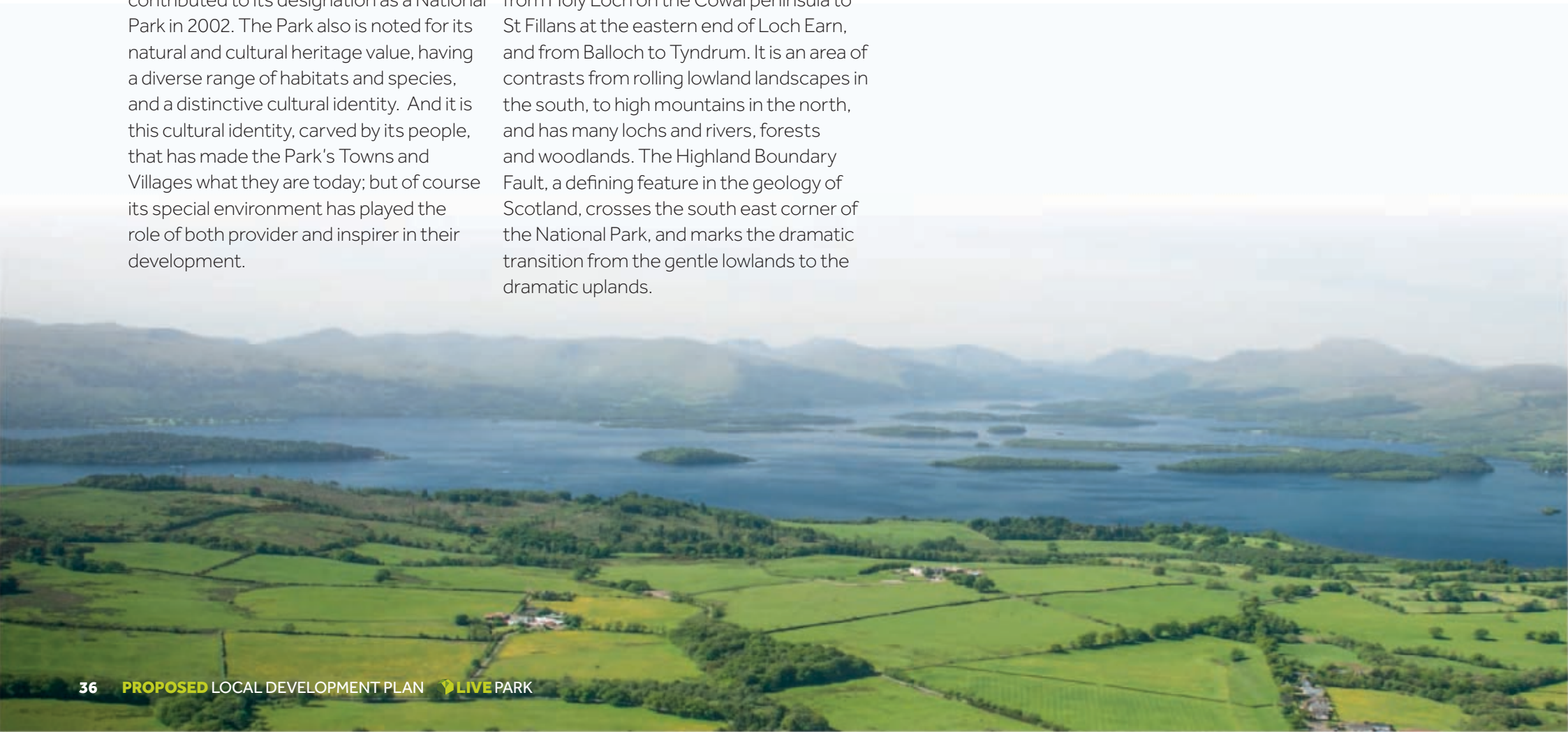
This section identifies new opportunities and the development needed to support our communities, visitors and local economy, whilst ensuring the ongoing conservation and enjoyment of the area's outstanding environment.

3.1 The National Park

Loch Lomond & The Trossachs has long been recognised as a special place. Since the times of Wordsworth and Scott its scenic qualities have been celebrated.

It is these qualities which have made the area such a popular place to visit and which contributed to its designation as a National Park in 2002. The Park also is noted for its natural and cultural heritage value, having a diverse range of habitats and species, and a distinctive cultural identity. And it is this cultural identity, carved by its people, that has made the Park's Towns and Villages what they are today; but of course its special environment has played the role of both provider and inspirer in their development.

The National Park covers 1,865 square kilometres (720 square miles), extending from Holy Loch on the Cowal peninsula to St Fillans at the eastern end of Loch Earn, and from Balloch to Tyndrum. It is an area of contrasts from rolling lowland landscapes in the south, to high mountains in the north, and has many lochs and rivers, forests and woodlands. The Highland Boundary Fault, a defining feature in the geology of Scotland, crosses the south east corner of the National Park, and marks the dramatic transition from the gentle lowlands to the dramatic uplands.

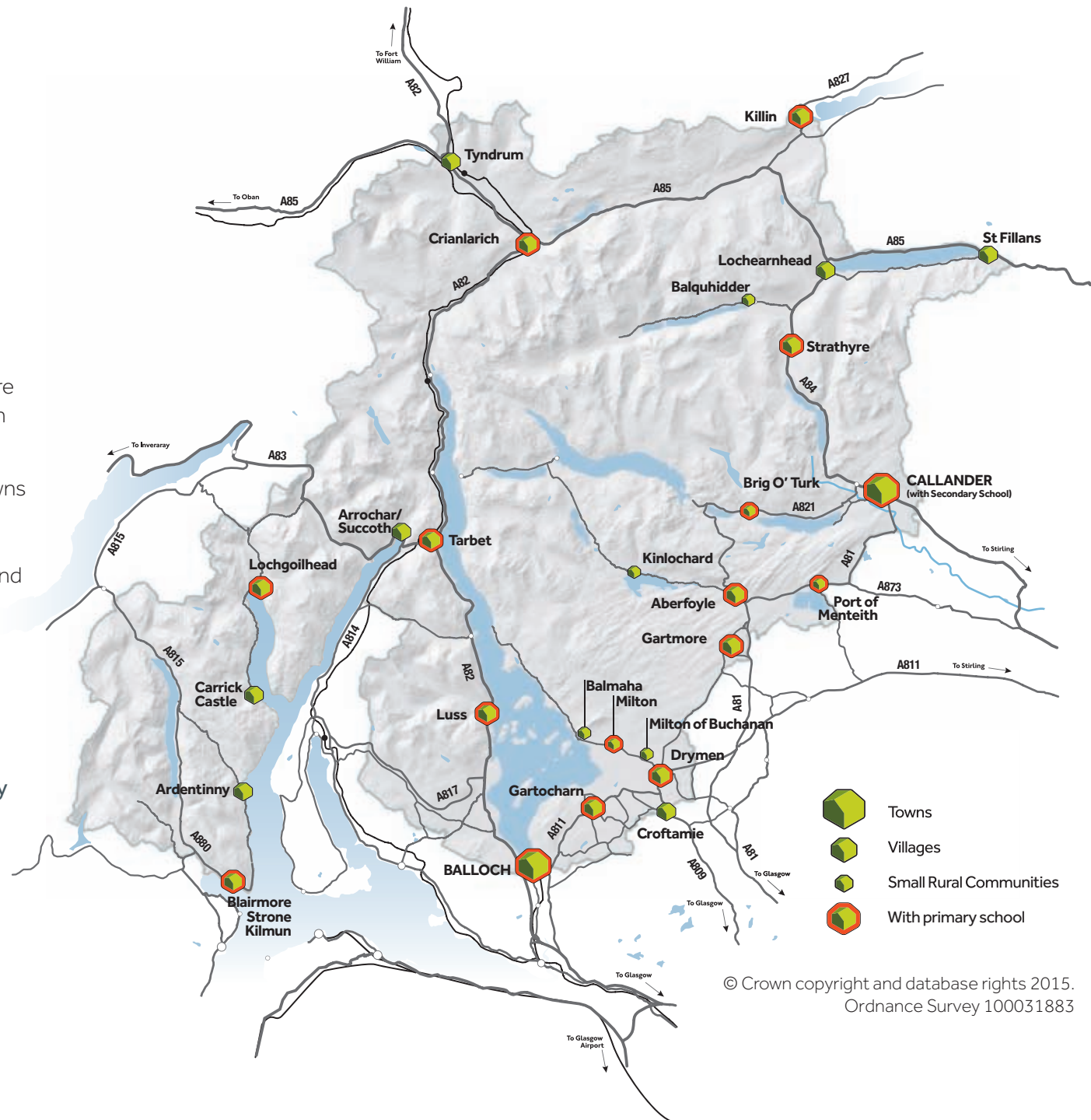


Towns and Villages

The Towns and Villages are central to the Plan's development strategy as this is where the majority of development is directed. This is appropriate as it is where the majority of services are located such as shops, schools, and health centres.

As well as having these services the Towns and Villages can attract investment to improve connections to the rest of the Park and beyond through the road, rail and path network. Some key facts include:

- 20 Towns and Villages exist within the Park
- 16 primary schools
- One secondary school (McLaren High), although the area is served by four outwith the Park's boundary.



© Crown copyright and database rights 2015.
Ordnance Survey 100031883

Environment

Land cover in the Park broadly comprises a mixture of upland and moorland vegetation (around 50%), woodlands and forestry (around 26%), enclosed agricultural land (around 15%) and water (around 7%).

Agriculture, particularly sheep production and forestry, remain the backbone of the rural economy, with the support from Government subsidies being critical. The entire Park area is currently covered by the Less Favoured Area Support Scheme which reflects the challenges to farming across the area - although this is currently being reviewed. While not the largest employer, the importance of their role in land management and maintaining the traditional character of the Park is significant. The Park has internationally important lochs and water catchments many of which are used for water extraction and hydro power generation.

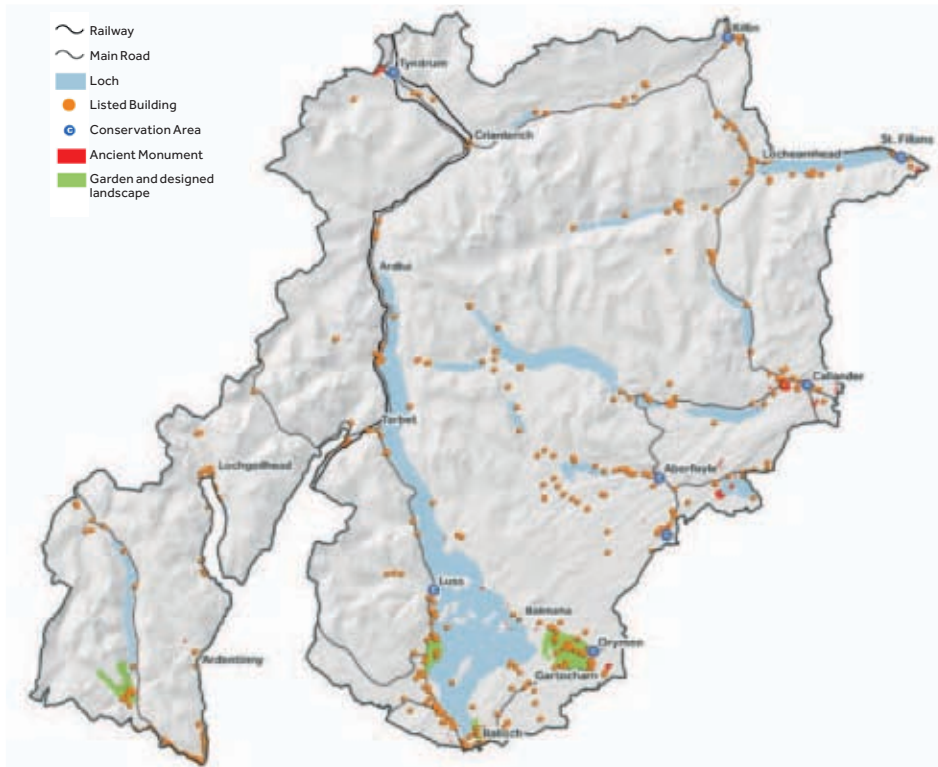
The geodiversity of the Park has led to a significant heritage of quarrying for building materials which has contributed to the distinct character of the area's built heritage. Mineral resources, including gold, also exist near Tyndrum.

Growing demands for tourism and recreation are leading to changes in patterns of land use, particularly around the south of Loch Lomond where many estates and their policies have been converted to golf courses and holiday accommodation. Such change can, if appropriately handled, present opportunities to better manage and enhance important landscape features and habitats, as well as provide wider recreation opportunities.

Some key facts relating to the environment include:

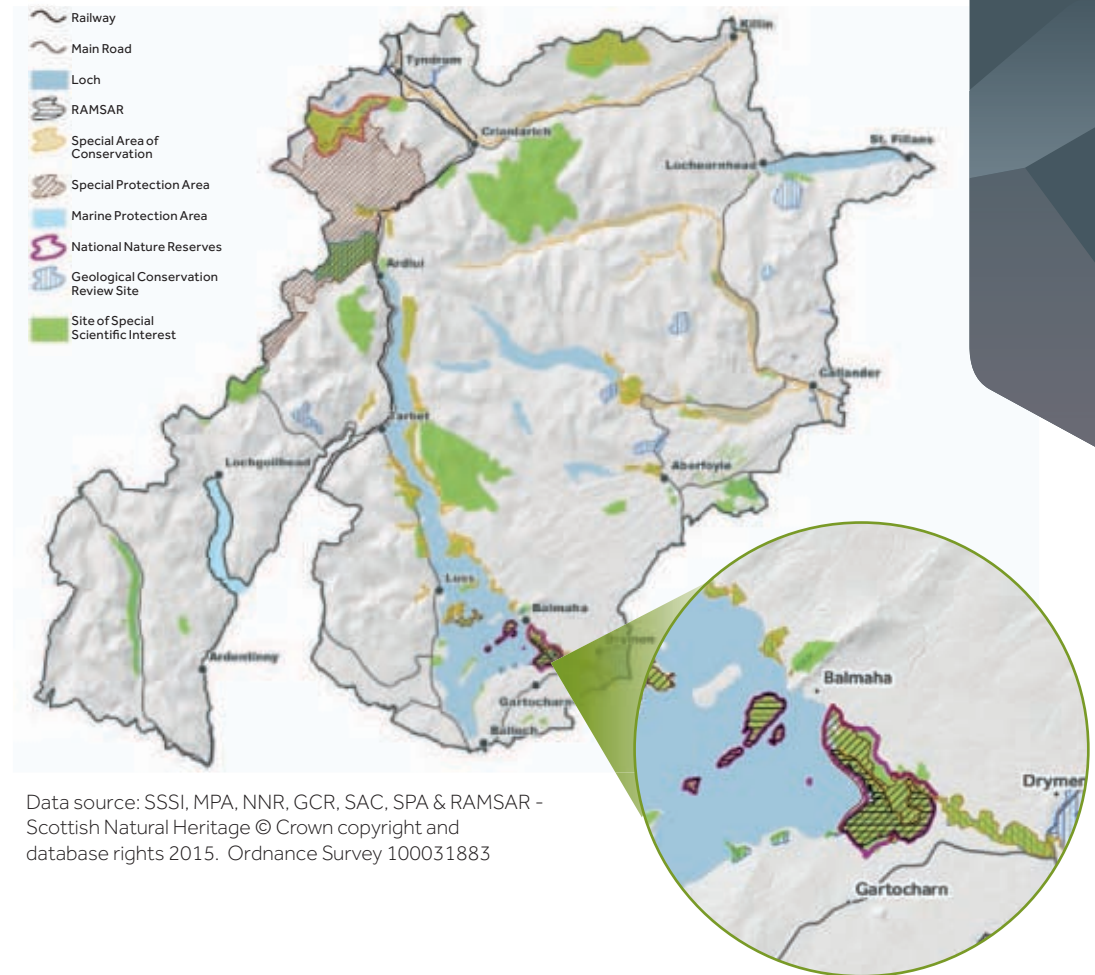
- 8 Special Areas of Conservation
- 2 Special Protection Areas
- 57 Sites of Special Scientific Interest (38 completely in The Park)
- 2 National Nature Reserves
- 1.5% of The Park forms Geological Conservation Review Sites
- 2 RAMSAR Sites
- 2 National Scenic Areas
- 2 Forest Parks
- Numerous non-inventory designed landscapes
- 22 Lochs
- 39 miles of coastline around three sea lochs
- 21 Munros and 19 Corbetts
- Loch Lomond is the largest expanse of freshwater in Great Britain
- 728 Listed buildings
- 8 Conservation Areas
- 62 Scheduled Ancient Monuments
- Widespread local archaeology, and
- 8 Gardens and Designed Landscapes Inventory

Cultural & Built Heritage Designation map



Data source: Listed Buildings, GDL & SAM - Historic Scotland © Crown copyright and database rights 2015. Ordnance Survey 100031883

Natural Heritage Designation map



Data source: SSSI, MPA, NNR, GCR, SAC, SPA & RAMSAR - Scottish Natural Heritage © Crown copyright and database rights 2015. Ordnance Survey 100031883

Economy

The Park's economy is dominated by tourism, land-based businesses and the service sector. The Value of the Park study commissioned in 2011 suggests that the value of visitor services is £205.9 million per annum.

Other aspects of the National Park's economy reflect its location as an area of accessible countryside within the hinterland of the cities and towns of central Scotland.

This close proximity to large urban areas and its high quality natural environment means that tourism dominates. It also means that the larger towns and cities close to the Park are typically more attractive locations for businesses and commercial premises as they are closer to their customers or demand for their services. However, the Park is an attractive area for people who work in these businesses to live and commute

from, and also for small or sole practice professional consultancies.

Rural landownership is dominated by privately managed farms and a number of large private estates along with public and third-sector land, particularly the Forestry Commission which includes large parts of the Queen Elizabeth and Argyll Forest Parks. Decisions made by land managers are key to ensuring a healthy rural economy.



People

The Park is host to people who live here, visit the Park, invest in local businesses, and experience the spectacular landscapes. The 2011 Census reported that the National Park has a population of 15,168. This is a reduction from the 2001 Census which was 15,600 and there is

expected to be a 10% reduction over the long term. Like Scotland as a whole, the percentage of people of a pensionable age in the National Park is set to increase over the next 20 years. It is predicted to increase by 13% from 2010 to 2035 with a reduction in our young people.

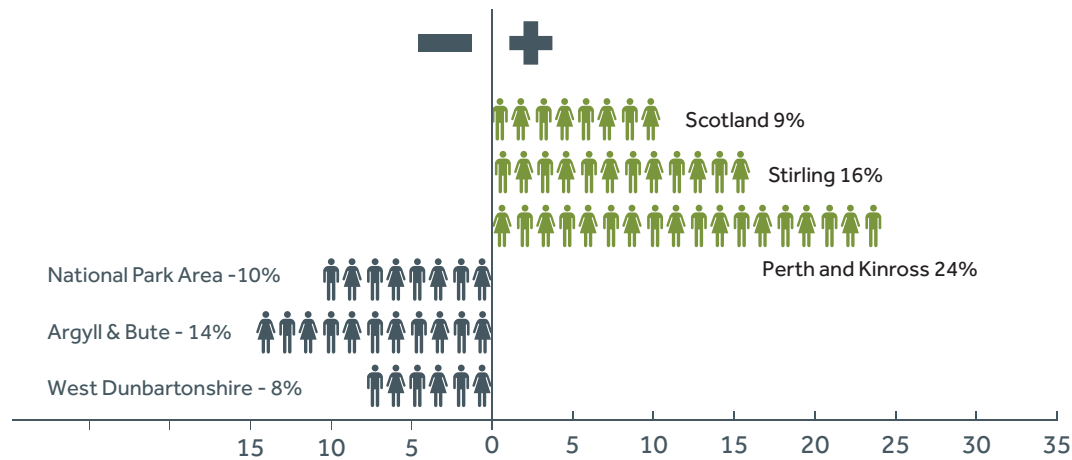


Table 1: National Records of Scotland Projected % Population change (2012 - 2037)



Transport

There are the following strengths to transport in the National Park:

- It is within an hour's travel of over two million people
- It is within an hour's travel of two of Scotland's largest airports.
- The main tourist route to the North West Highlands runs through it – the A82.
- Numerous piers and slipways provide access to our Lochs.
- 6 railway stations (Ardlui, Arrochar, Balloch, Crianlarich, Tyndrum Upper and Lower).
- 4 trunk roads (A82, A83, A84 & A85).
- Major upgrades are underway or recently complete on the A82 at Pulpit rock and Crianlarich By-pass.

3.2 Our Towns and Villages

In this section you will see maps which illustrate the Plan's policies and proposals spatially.

A map of each Town and Village in the Park has been produced, along with site maps which we have allocated for specific development uses such as housing, economic development and visitor experience. These are provided separately.

There are extra illustrations for seven site maps which we feel merit further consideration of the placemaking and design principals stated earlier in this Plan.

In the site maps you will find a series of icons which display the key considerations which should be taken into account before submitting a development proposal. This list of icons is not exhaustive and before submitting a planning application, we strongly recommend applicants approach us for pre-application discussions. A detailed explanation of what the icons mean can be found in Appendix 3.



© Crown copyright and database rights 2015. Ordnance Survey 100031883

Key for Site Map Icons

	ARCHAEOLOGICAL ASSESSMENT		WASTE CAPACITY
	ACTIVE TRAVEL PLAN		NATURAL ENVIRONMENT DESIGNATION
	WOODLAND/ANCIENT WOODLAND		OPEN SPACE PROVISION (PLAY AREAS)
	HISTORIC ENVIRONMENT		DESIGN DOCUMENT
	CORE PATH(S) ON OR ADJACENT TO SITE		PUBLIC PARKING REQUIRED
	DEVELOPER CONTRIBUTIONS		PLACEMAKING PRIORITY
	SUSTAINABLE DRAINAGE SYSTEM		TRANSPORT ASSESSMENT
	DRAINAGE IMPACT ASSESSMENT		CONTAMINATED LAND
	FLOOD RISK ASSESSMENT		ACCESS
	LANDSCAPE ASSESSMENT		LANDSCAPE CONTEXT
	LINKAGES TO BE PROVIDED		BUILT ENVIRONMENT
	LOCHSHORE PROTECTION		GEOLOGY
	LONG TERM SITE		ROAD SAFETY

Key for Town/Village Maps

HOUSING	
VISITOR EXPERIENCE	
MIXED USE	
ECONOMIC DEVELOPMENT	
RURAL ACTIVITY	
TRANSPORT	
PLACEMAKING PRIORITY	
<hr/>	
CONSERVATION AREA	
SETTLEMENT BOUNDARY	
CORE PATHS	
OPEN SPACE	

CALLANDER

Callander is the largest town in the National Park offering a gateway in the east. It has a distinct character strongly influenced by its unique position sitting alongside the River Teith and where the lowlands meet the highlands.

The spectacular backdrop of Ben Ledi and Callander Craggs adds to its appeal as a tourism destination. Callander is an 18th century planned town with broad linear main street offering a wide range of services and facilities, punctuated by Ancaster Square and St Kessogs. Its character is derived from its many slate and stone built buildings - many constructed in the distinctive local puddingstone.

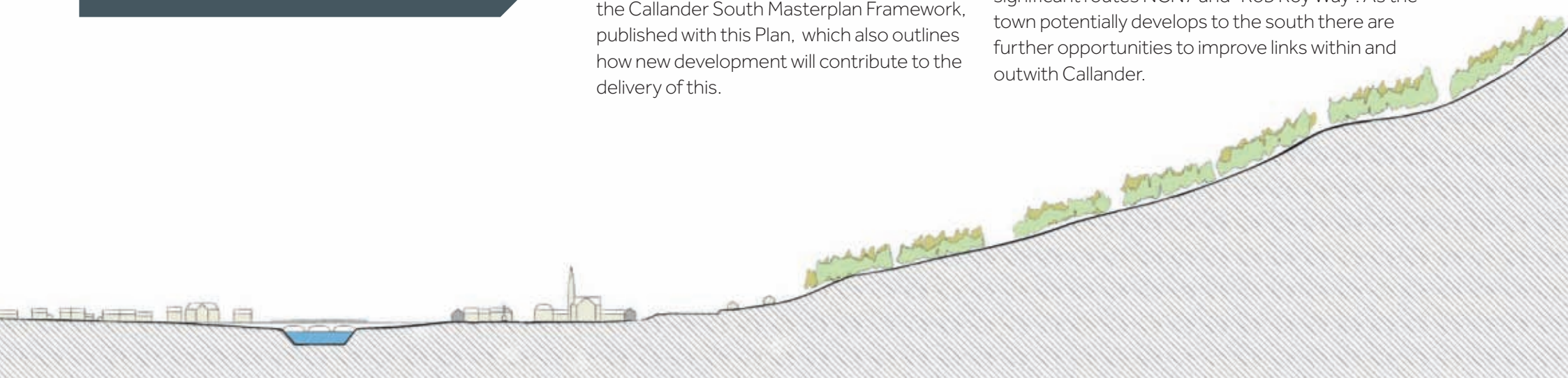
The community holds aspirations to really improve the facilities for visitors with ongoing improvements to the town centre. The main focus for future development is therefore to;

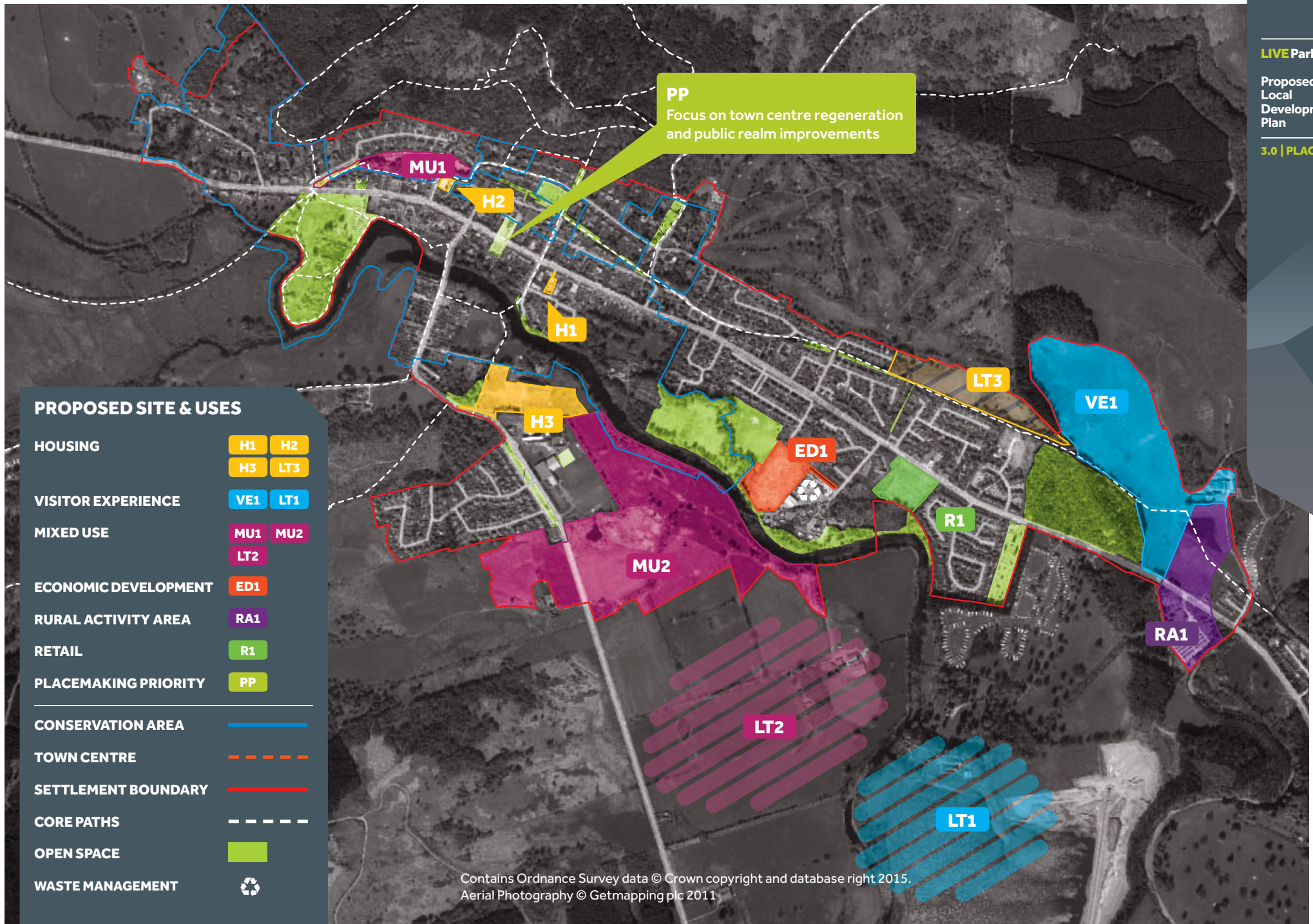
- support the town centre and modernise Station Road car park;
- deliver opportunities for a new supermarket and visitor accommodation, and,
- focus most new development to a large mixed use development to the south with new homes, land for businesses, a riverside park and a new hotel.

Further Planning Guidance is included within the Callander South Masterplan Framework, published with this Plan, which also outlines how new development will contribute to the delivery of this.

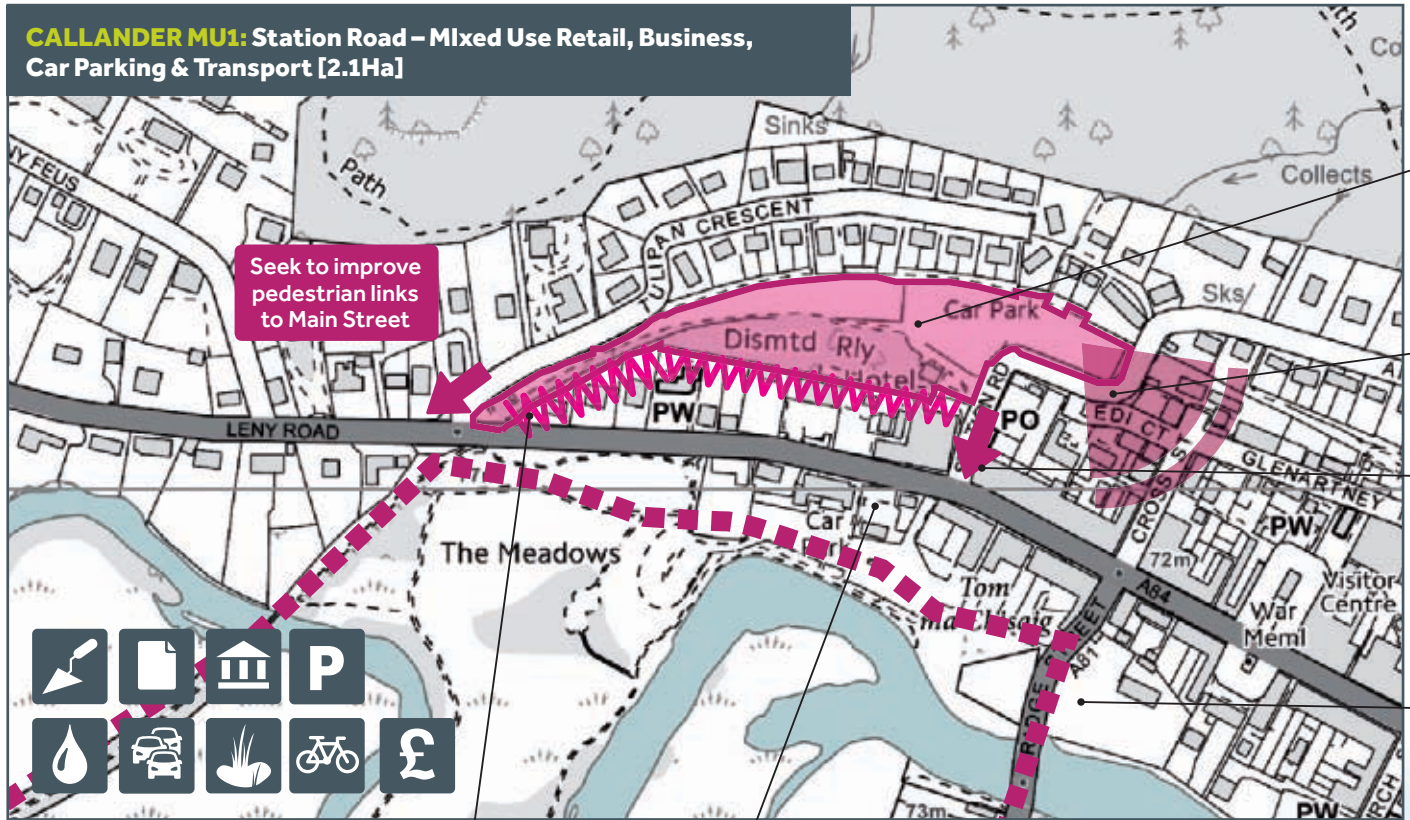
The community also have aspirations to improve the well-developed walking and cycling network throughout the area. Roadside footways and off road paths provide a path network which is extensive, generally multi-modal and offers a variety of utility journeys and recreational experiences to both residents and visitors.

There are opportunities to significantly improve this network, making it an exemplar walking and cycling friendly town. National Cycle Network (NCN) 76 provides a key active travel artery through the length of the town and National Planning Framework 3 highlights an aspiration that this will eventually link through to Doune and onto Stirling and the strategic path network beyond. The town is already well served by strategically significant routes NCN7 and "Rob Roy Way". As the town potentially develops to the south there are further opportunities to improve links within and outwith Callander.





CALLANDER MU1: Station Road – Mixed Use Retail, Business, Car Parking & Transport [2.1Ha]



Seek to improve pedestrian links to Main Street

Retain central area for car park
Number of car parking spaces to be confirmed following town centre car parking review

Views towards Ancaster bridge

Seek to improve pedestrian links to Main Street

Link to cycle route NCN7

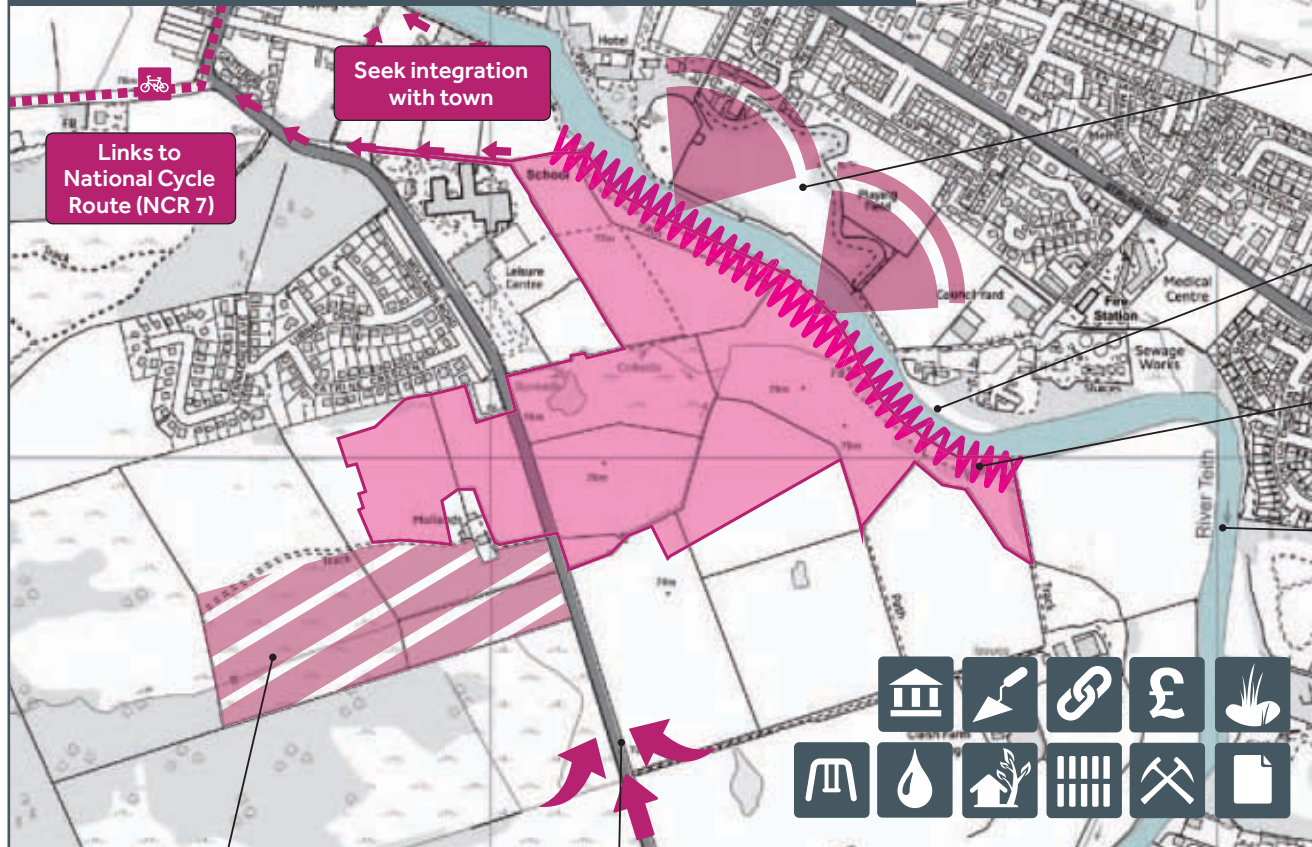
Sensitive edge of Conservation Area

Retain prominence of hotel



This illustration highlights how some of the principles could be applied on site

CALLANDER MU2: Claish Farm – Visitor Experience, Economic Development, Housing [90 homes] & Playing Field



Historic garden & designed landscape

Mitigate against any possible impact on River Teith (SAC)

Sensitive boundary: River Teith (SAC), flood risk

High quality landscape, river character

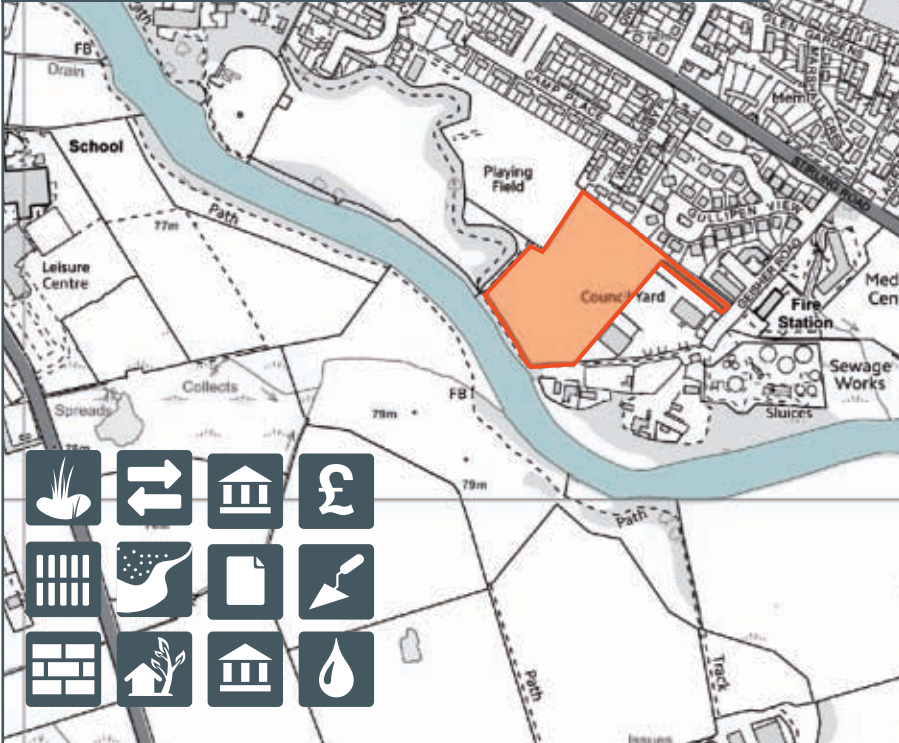
Impact on protected geological site (SSSI)

Key new gateway approach

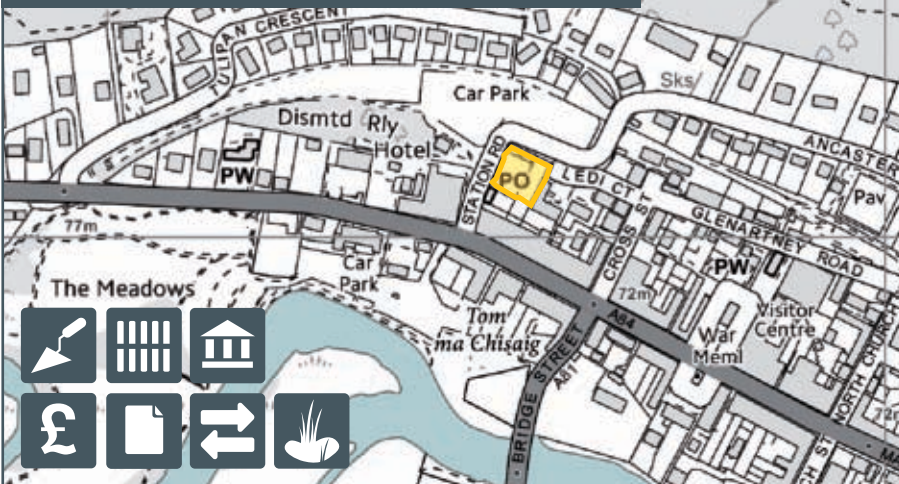


This illustration highlights how some of the principles could be applied on site

CALLANDER ED1: Lagrannoch industrial estate – Economic Development [2.1Ha]



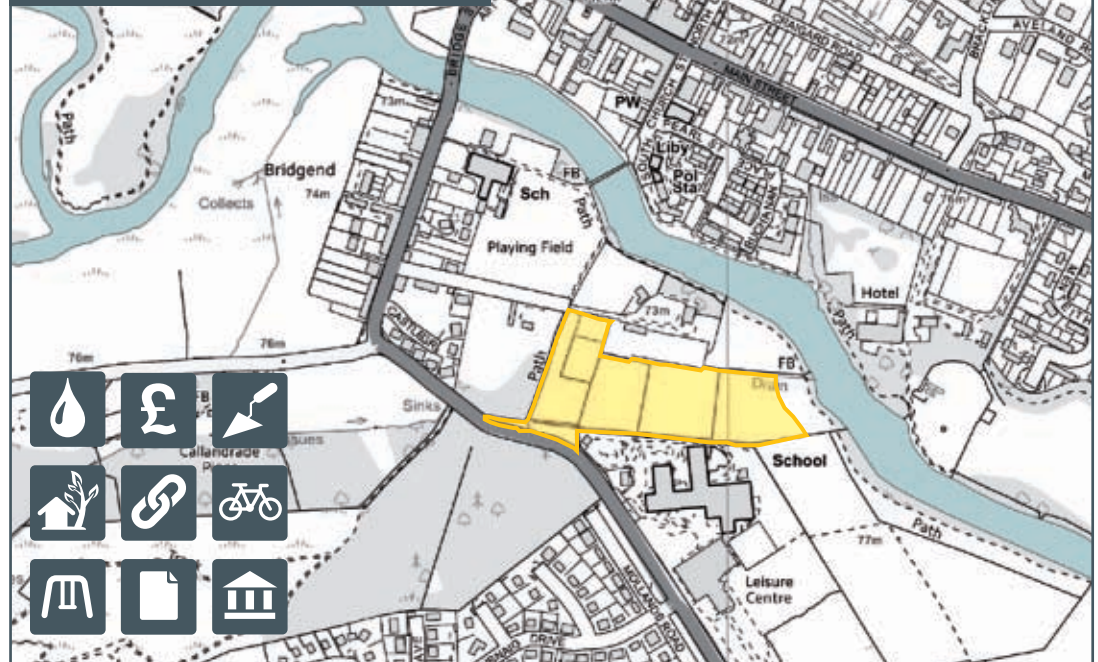
CALLANDER H2: Old Telephone Exchange – Housing [23 homes]



CALLANDER H1: Pearl Street – Housing [5 homes]

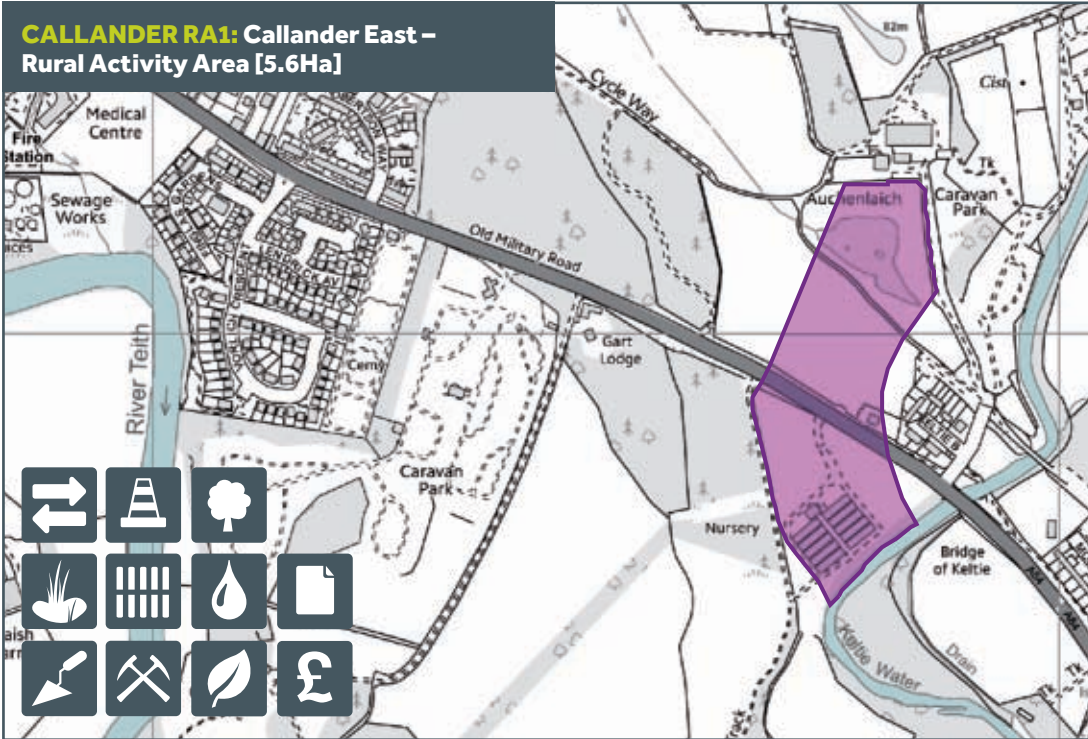


CALLANDER H3: Churchfields – Housing [30 homes]



© Crown copyright and database rights 2015. Ordnance Survey 100031883

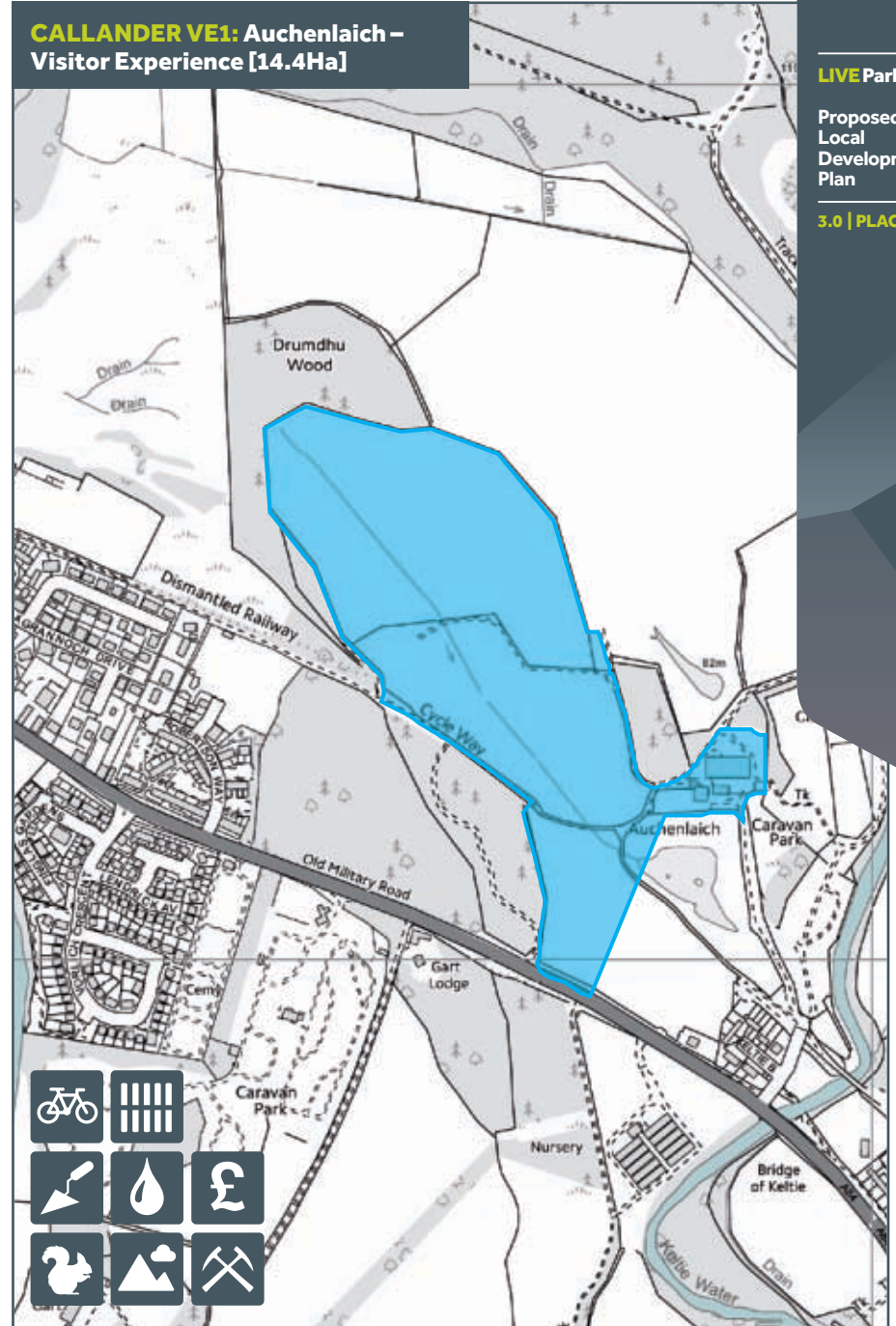
CALLANDER RA1: Callander East – Rural Activity Area [5.6Ha]



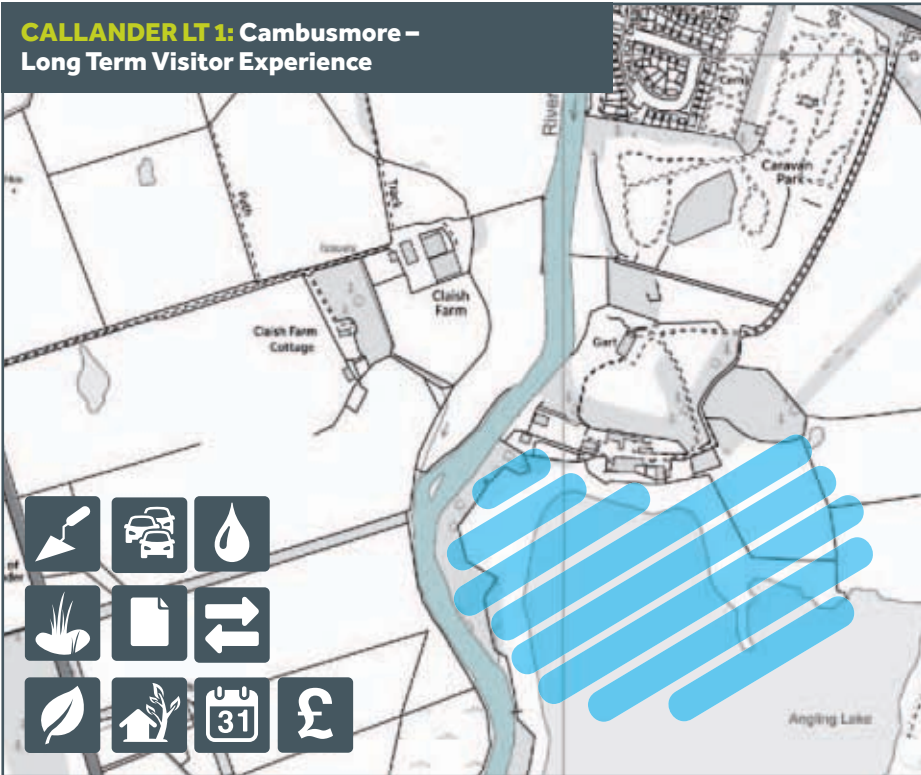
CALLANDER RET1: Stirling Road – Retail [1.44Ha]



CALLANDER VE1: Auchenlaich – Visitor Experience [14.4Ha]



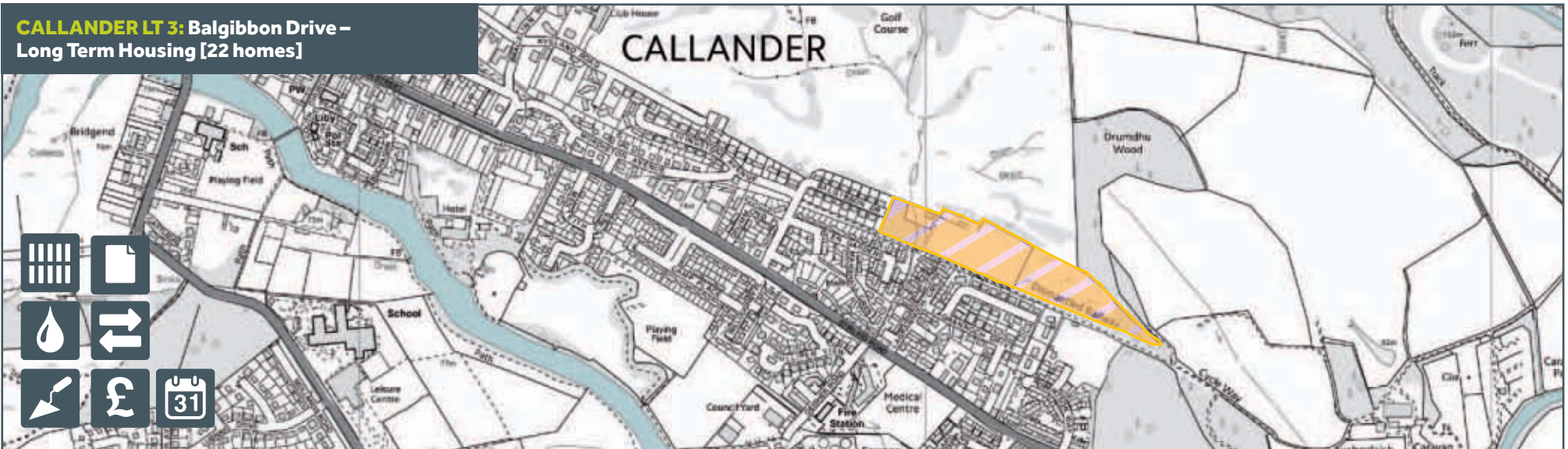
**CALLANDER LT 1: Cambusmore –
Long Term Visitor Experience**



**CALLANDER LT2: Claiash Farm
Long Term - Housing [100 homes] and Visitor Experience**



**CALLANDER LT 3: Balgibbon Drive –
Long Term Housing [22 homes]**



© Crown copyright and database rights 2015. Ordnance Survey 100031883

ARROCHAR & SUCCOTH

Arrochar and Succoth lie in a stunning setting at the top of Loch Long and surrounded by hills and mountains.

The Villages have grown along the lochshore. The area has fantastic opportunities to develop more as a marine gateway with the redevelopment of the former Torpedo site. Additionally, there is new housing being built in Succoth and a proposal to create a new village 'centre' for the community beside the Three Villages Hall. This area offers great opportunities for a range of new homes, employment, community and visitor infrastructure.

PROPOSED SITE & USES

HOUSING



VISITOR EXPERIENCE



MIXED USE



ECONOMIC DEVELOPMENT



TRANSPORT



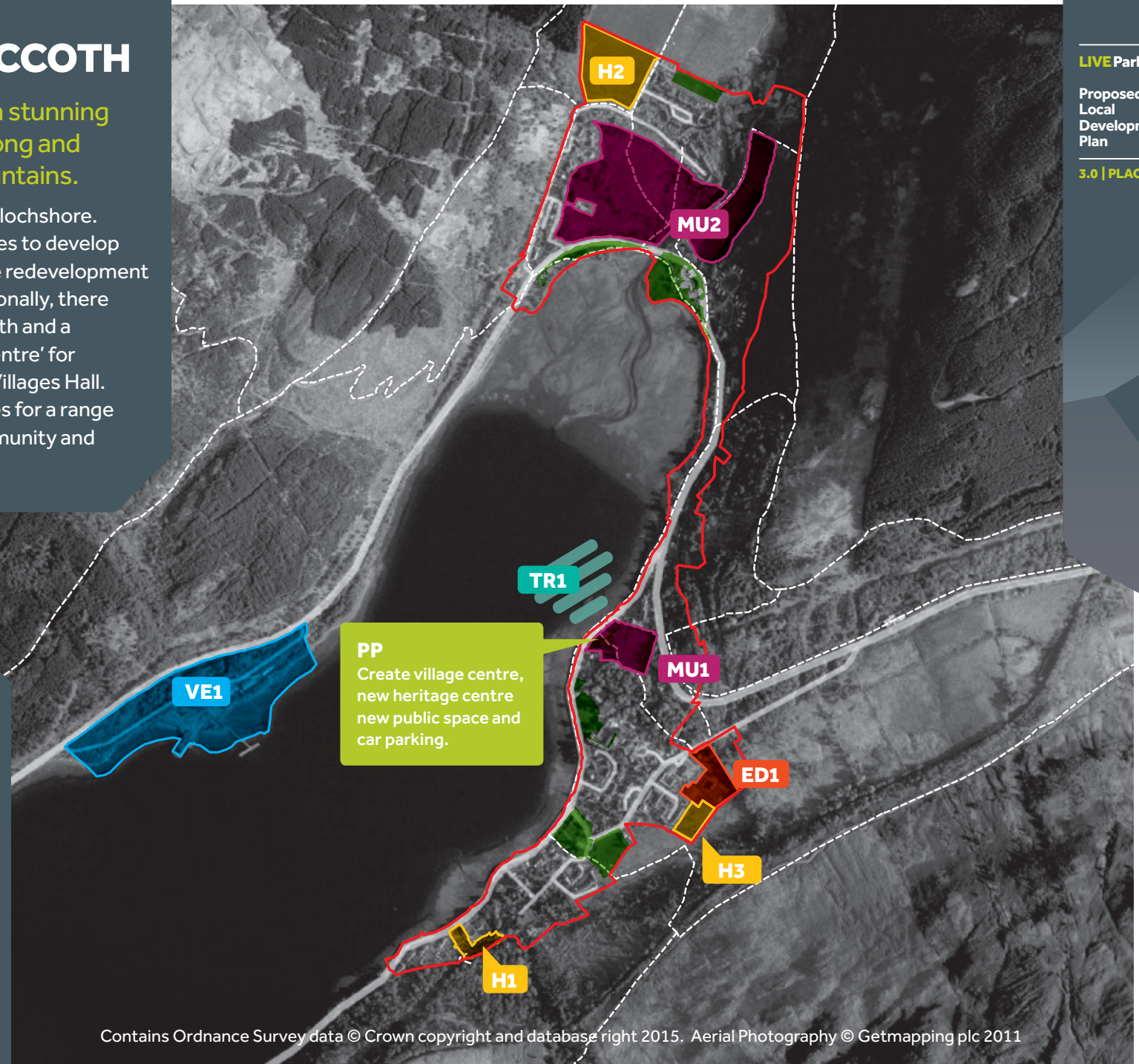
VILLAGE BOUNDARY



CORE PATHS

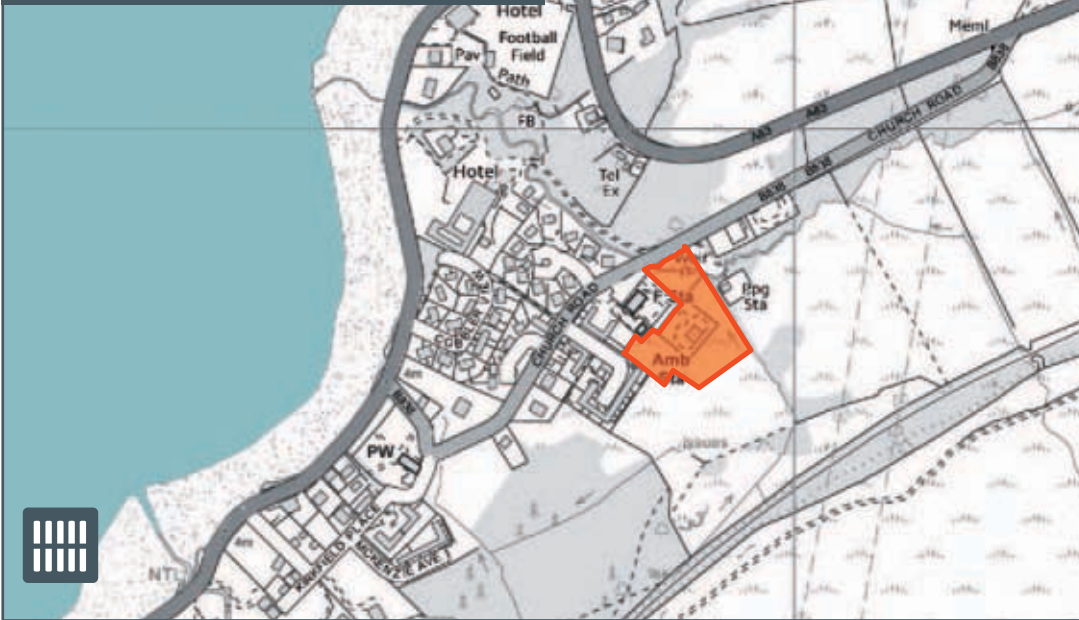


OPEN SPACE

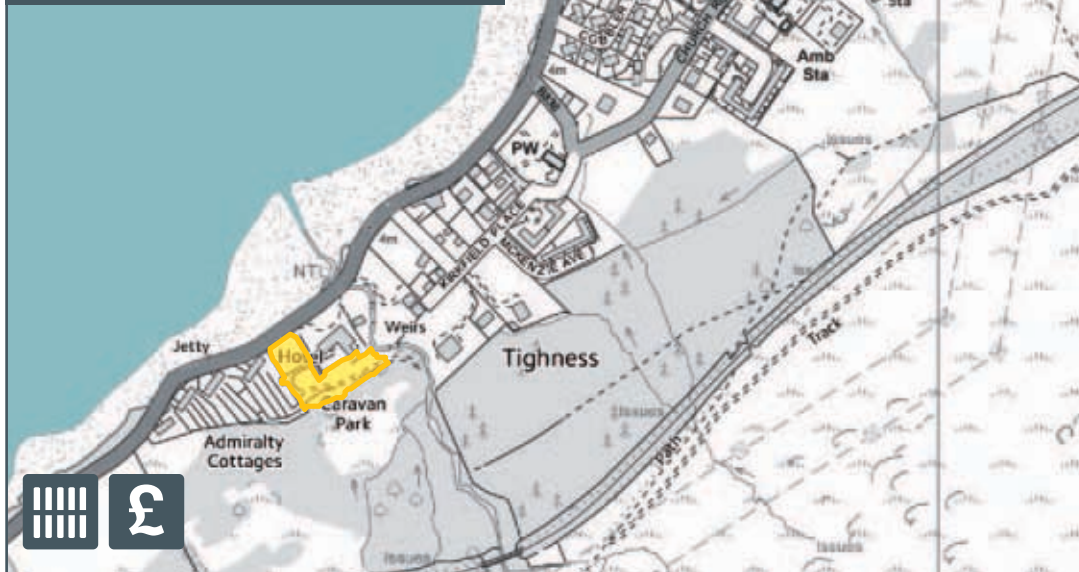


Contains Ordnance Survey data © Crown copyright and database right 2015. Aerial Photography © Getmapping plc 2011

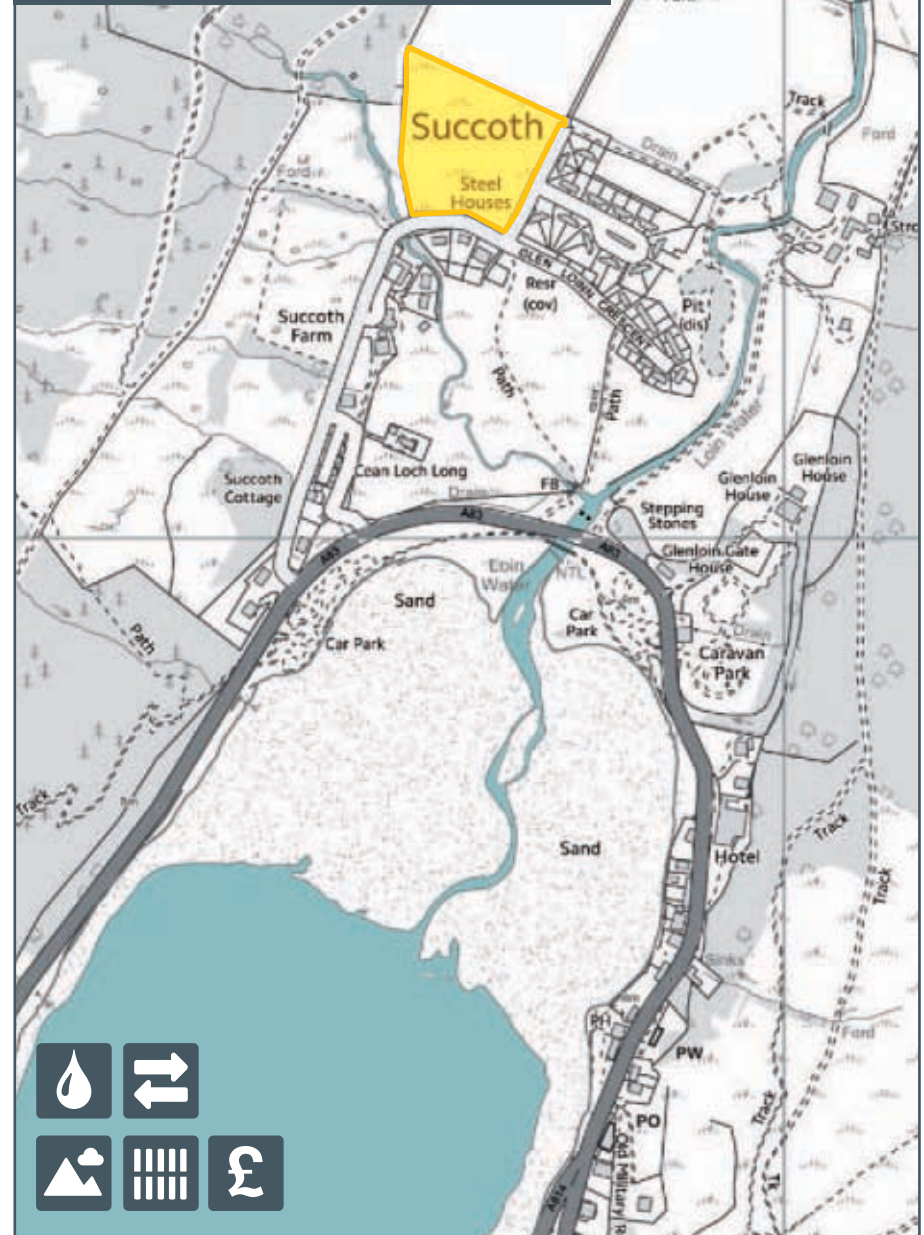
ARROCHAR ED1: Church Road – Economic Development [0.95Ha]



ARROCHAR H1: Cobblers Rest – Housing [12 homes]



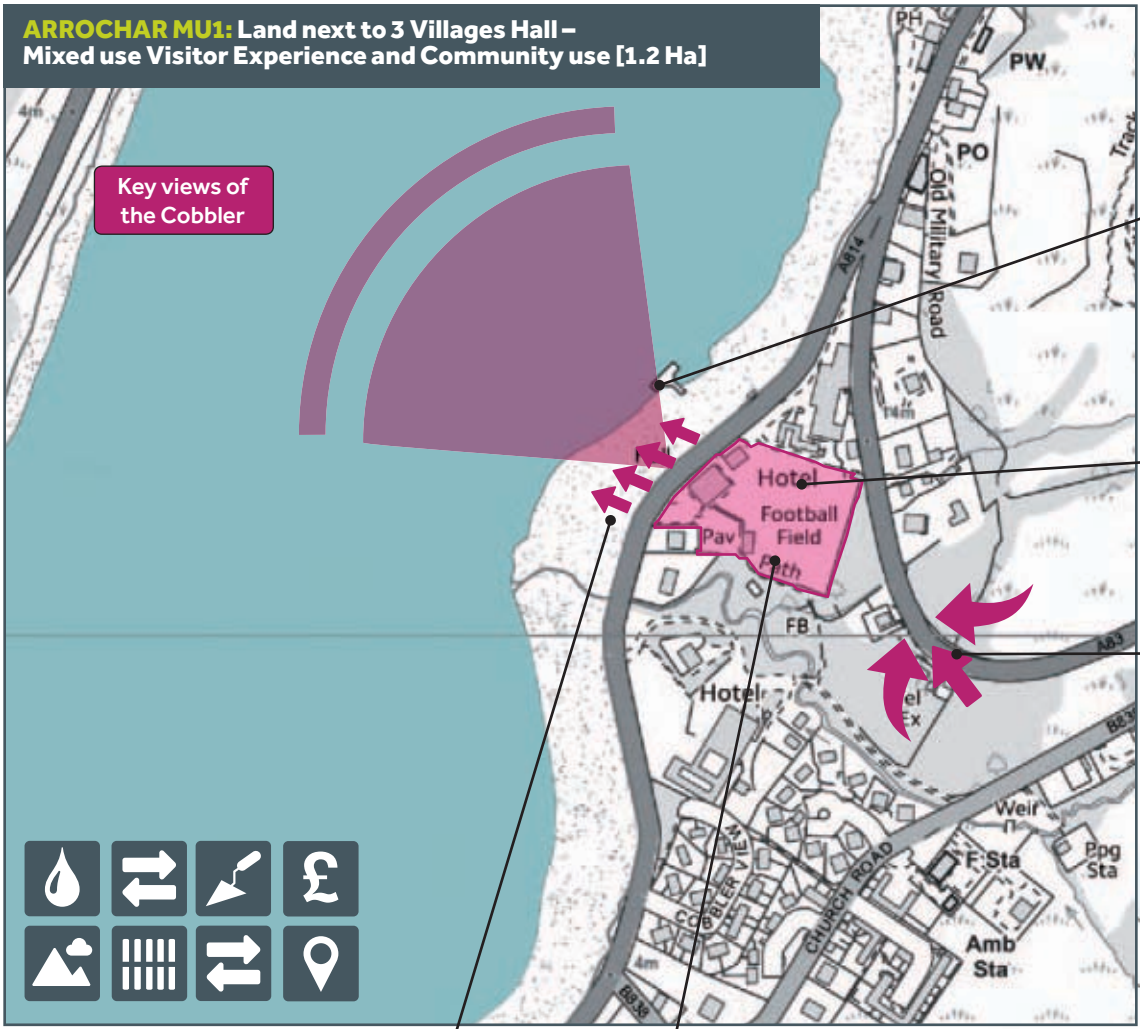
ARROCHAR H2: Succoth – Housing [26 homes]



© Crown copyright and database rights 2015. Ordnance Survey 100031883

ARROCHAR MU1: Land next to 3 Villages Hall – Mixed use Visitor Experience and Community use [1.2 Ha]

© Crown copyright and database rights 2015. Ordnance Survey 100031883



Key views of the Cobler

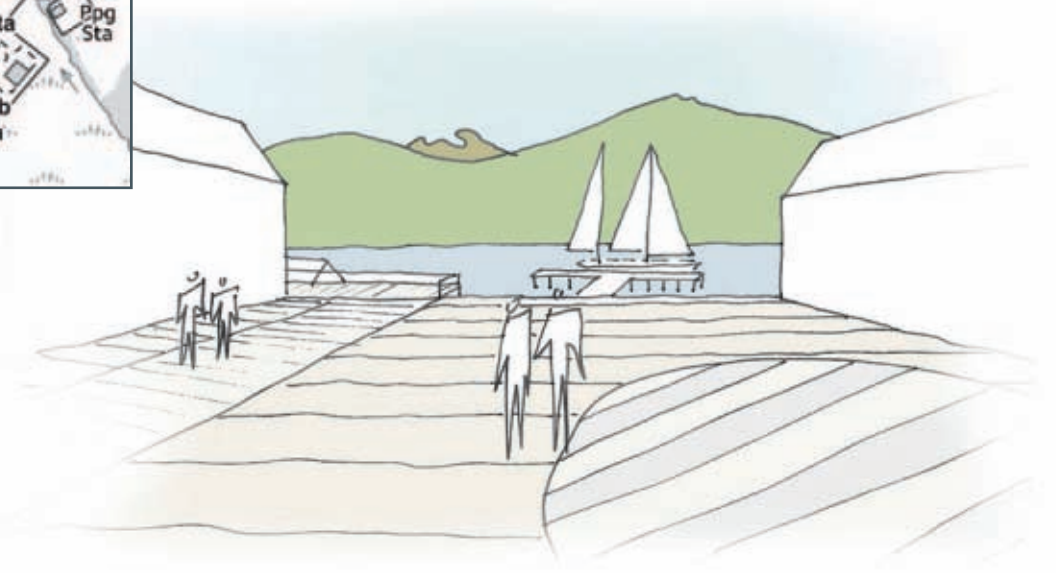
Links to new pier

Community/visitor activity supported by retail and housing

Sense of arrival with key views of the Cobler

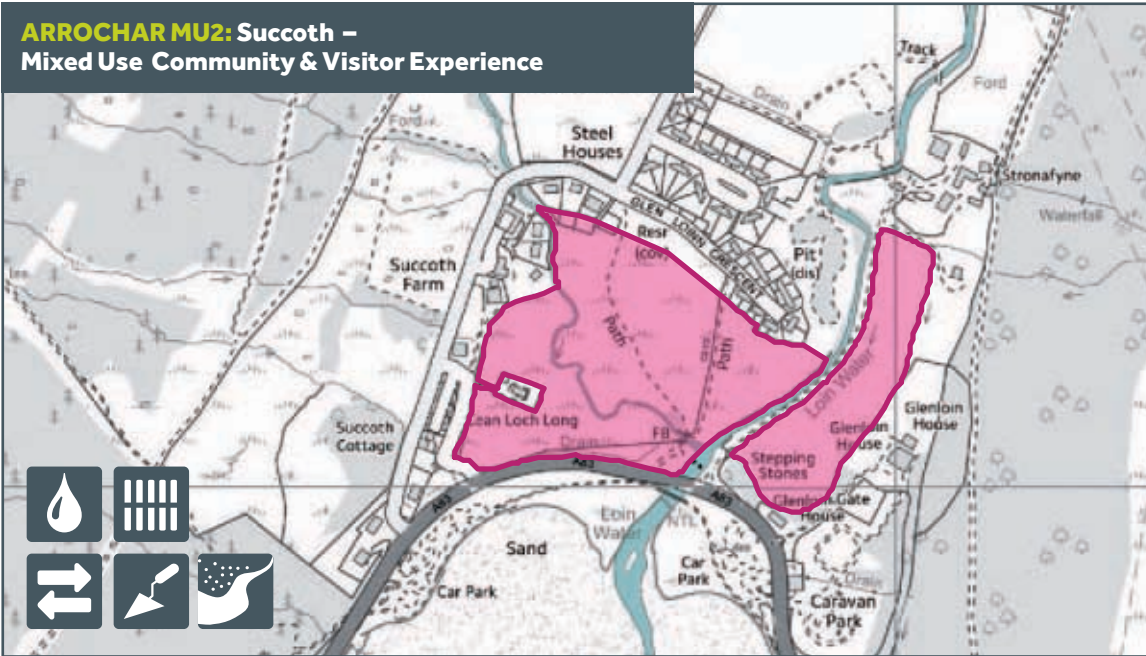
Building with active frontage onto the loch

New village centre

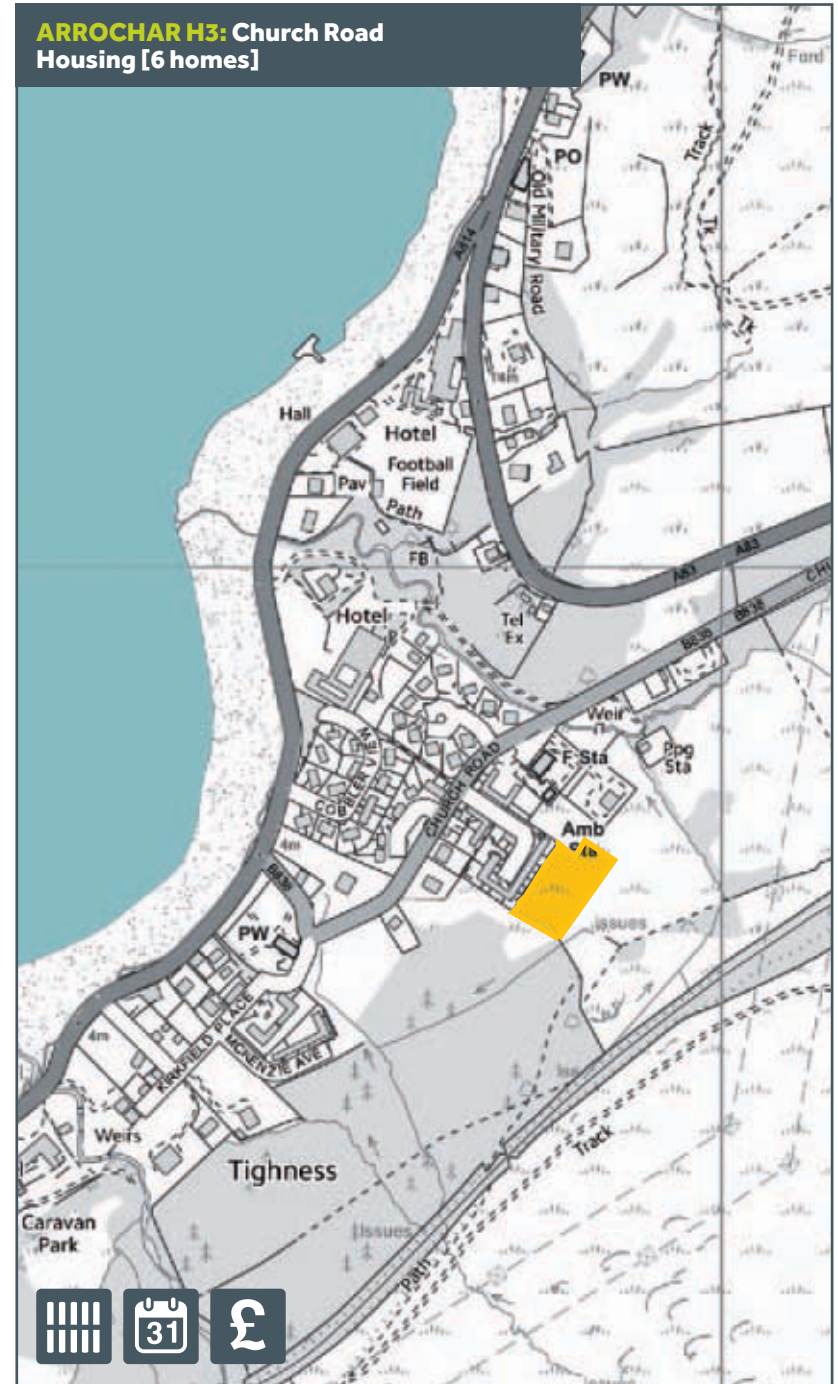


This illustration highlights how some of the principles could be applied on site

ARROCHAR MU2: Succoth –
Mixed Use Community & Visitor Experience



ARROCHAR H3: Church Road
Housing [6 homes]



ARROCHAR VE1: Ben Arthur –
Mixed Use Housing [16 homes] and Visitor Experience



© Crown copyright and database rights 2015. Ordnance Survey 100031883

BALLOCH

Balloch sits on the shores of Loch Lomond and forms the southern gateway to the National Park.

Balloch attracts a high number of tourists with easy access from Glasgow. Balloch is notable for being the main access to Loch Lomond, the Country Park, Loch Lomond Shores and numerous historic buildings.

Future development includes housing, visitor experience, leisure and mixed use. Several development opportunities support the aim of bringing back into use great listed buildings including Balloch Castle and Woodbank House. Loch Lomond Shores is an exceptional retail and visitor attraction within the National Park and the links from the train station will be improved.

PROPOSED SITE & USES

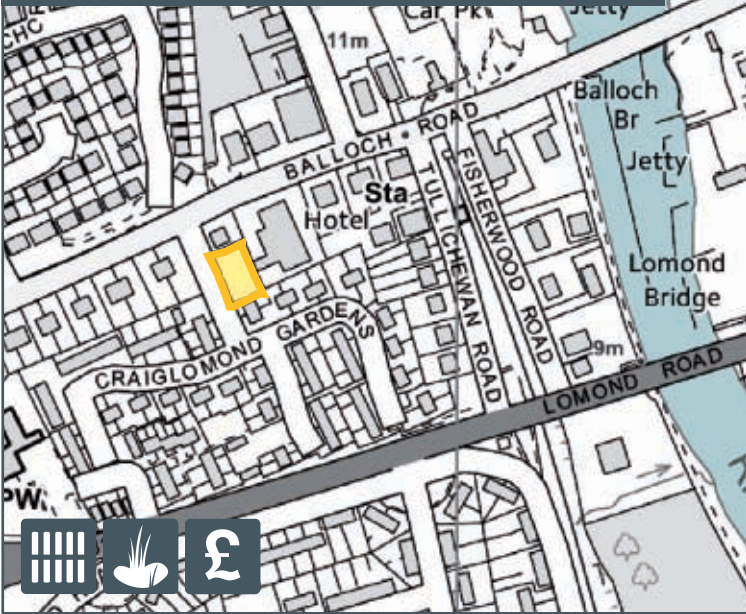
- HOUSING H1
- MIXED USE MU1 MU2
- VISITOR EXPERIENCE VE1 VE2
VE3 VE4
- TRANSPORT TR1
- PLACEMAKING PRIORITY PP

- TOWN BOUNDARY
- CORE PATHS
- OPEN SPACE

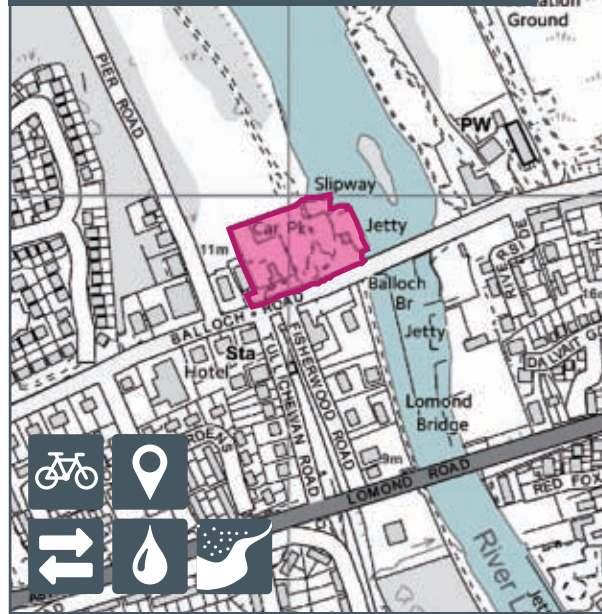


Contains Ordnance Survey data © Crown copyright and database right 2015. Aerial Photography © Getmapping plc 2011

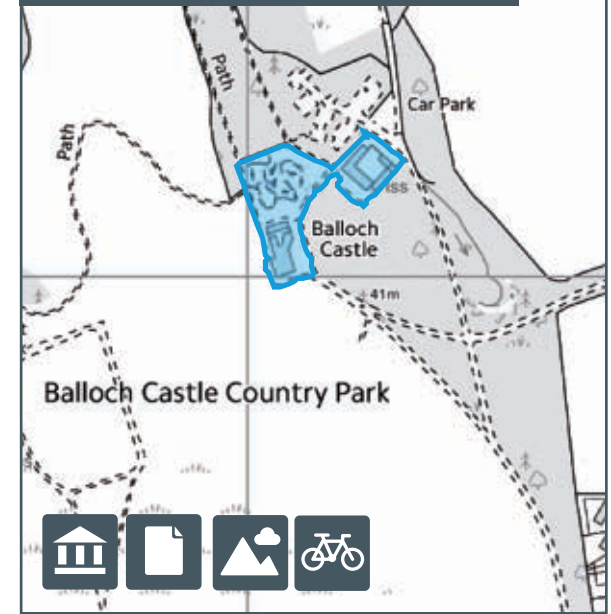
BALLOCH H1:
North Craiglomond Gardens – Housing [8 homes]



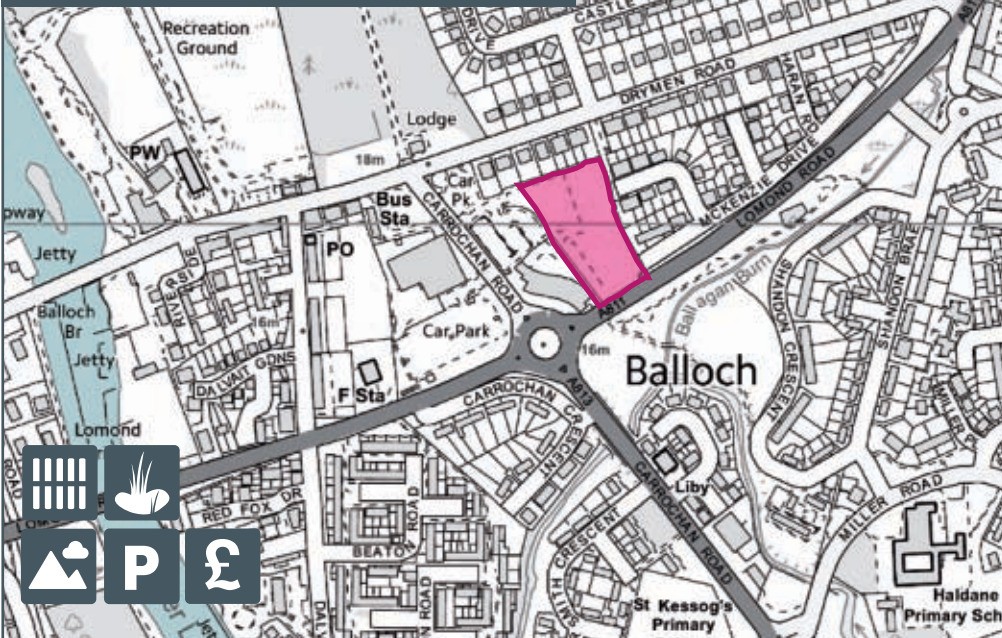
BALLOCH MU1: The Old Station – Visitor Experience & Transport [0.8Ha]



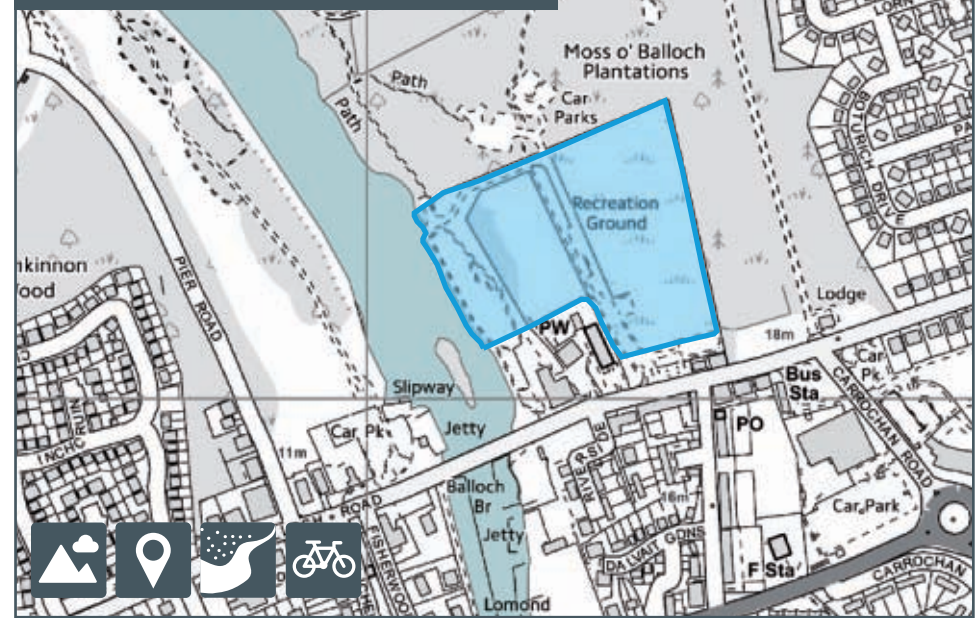
BALLOCH VE3: Balloch Castle – Visitor Experience [0.9Ha]



BALLOCH MU2: Carrochan Road – Mixed Use Housing [23 homes] & Car Parking

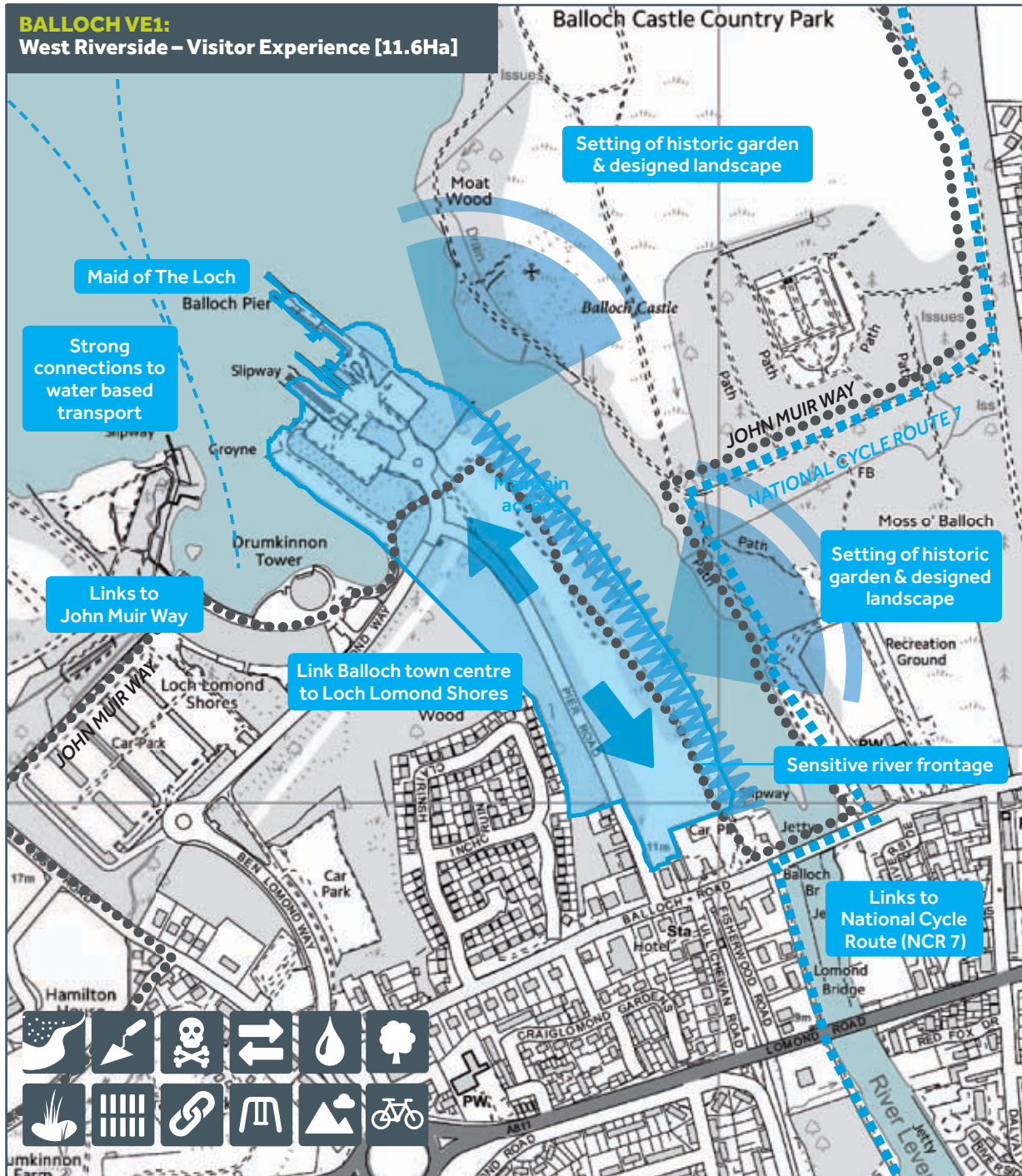


BALLOCH VE2: East Riverside – Visitor Experience [4.1Ha]



© Crown copyright and database rights 2015. Ordnance Survey 100031883

BALLOCH VE1:
West Riverside – Visitor Experience [11.6Ha]



BALLOCH VE4: Woodbank House –
Visitor Experience [9.5Ha]

