

Preparing our new Local Development Plan

Development Plan Scheme
March 2025

Contents

What is a Development Plan Scheme?	3
What is a Local Development Plan?	3
Monitoring and Delivery	3
Reforming the Planning System	3
Additional Plans and Strategies	5
National Park Partnership Plan	5
Local Place Plans	6
Regional Spatial Strategy	6
The process to prepare a Local Development Plan	7
Preparing the new Local Development Plan	7
Local Development Plan Updated Timeline 2025 - 2027	8
Participation Statement and Engagement	11
Previous Engagement	11
Overriding Principles of the Consultation and Engagement Plan	12
Who will we engage with?	13
How will we engage?	14
When will we engage?	16
Next Steps of the Engagement Process	19
Contact Us	21

What is a Development Plan Scheme?

The Development Plan Scheme outlines the programme for preparing and reviewing our Local Development Plan. It provides high level information on what is likely to be involved at each stage.

This Development Plan Scheme provides:

- An update on the focus of our work over the coming year.
- An indication of timescales for preparing the new Local Development Plan.
- Information on how and when we will engage with our communities and stakeholders (this is called our Participation Statement).

What is a Local Development Plan?

In Scotland, the planning system operates on a plan-led approach, with development plans playing an important role in setting out how land should be used and developed for long-term public interest. Local Development Plans outline the expected changes to areas over time and specify where development should or should not occur based on policies and proposals. Overall, the Local Development Plan serves as a guiding document for planning decisions on new development projects.

For the National Park, the statutory development plan comprises both [National Planning Framework 4 \(NPF4\)](#) and the [Local Development Plan](#), forming the basis for determining planning applications. The Local Development Plan outlines a vision for development over the next 20 years, alongside a spatial strategy guiding land use and development.

Currently, we are in the early stages of the process of preparing our new Local Development Plan, and this update provides an indication of our timeline for this.

Our new Local Development Plan will be key for the delivery of our new National Park Partnership Plan. It will include policies and priorities that will guide all future development decisions and our work to influence land use and investment that realises our Vision for the National Park to be a thriving place that is nature positive and carbon negative.

Monitoring and Delivery

We monitor delivery of the Local Development Plan's development strategy and use of policies. This is published in our annual monitoring report and contributes towards the evidence base for the next plan. A key tool to help co-ordinate the delivery of the plan is our Delivery Programme. The Delivery Programme identifies what is to be done, who is responsible and when it will be achieved. The Delivery Programme was last updated in March 2025 and is available on our website: [\(linked here\)](#).

The Planning (Scotland) Act 2019 introduced significant changes to the Scottish Planning System. One notable adjustment is the revised frequency for preparing Local Development Plans, extending the requirement from every five years to ten years. Additionally, local communities now can create Local Place Plans which are to be considered when preparing the Local Development Plan.

As part of these reforms, [the National Planning Framework 4](#) (NPF4), adopted in February 2023, has been elevated to a higher status within the statutory development plan, alongside the Local Development Plan (see Figure 1). Covering the period until 2045, NPF4 outlines the policies and proposals set by the Scottish Ministers regarding land development and use.

In May 2023, the Scottish Government published Local Development Planning Guidance which sets out Scottish Ministers expectations for implementing new style Local Development Plan.

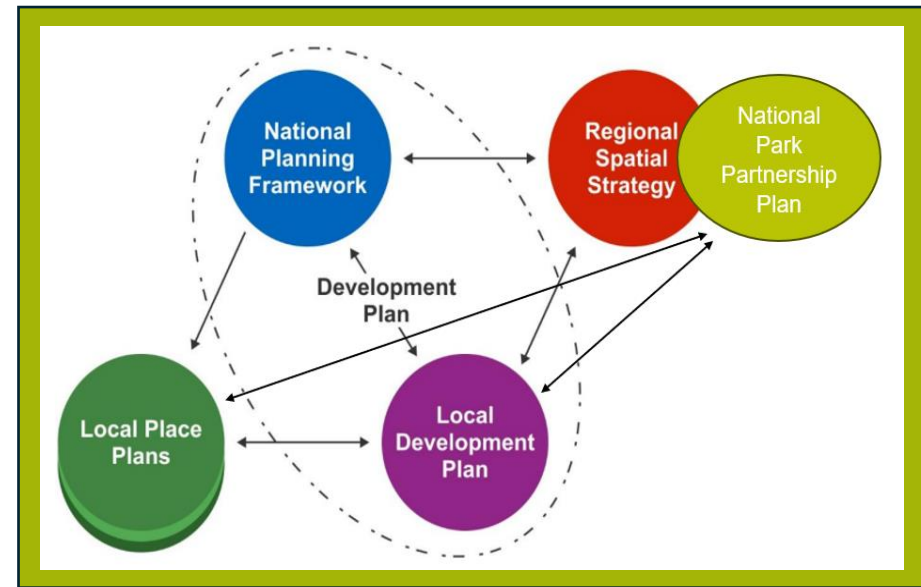


Figure 1: National Park Statutory Development Plan and Related Plans

The following related plans and strategies are discussed in more detail on the following page:

- National Park Partnership Plan
- Regional Spatial Strategy
- Local Place Plans

Additional Plans and Strategies

Various other plans and strategies will help inform preparation of the next Local Development Plan. These are summarised below to illustrate their role and correlation with one another.

National Park Partnership Plan

The purpose of the National Park Partnership Plan is to guide how all of those with a role to play in looking after the National Park will work together to manage the National Park and achieve a shared vision for the area, as shown below.

National Park Partnership Plan Vision

‘By 2045 the National Park is a thriving place that is nature positive and carbon negative.’

National Park Partnership Plan Core Outcomes

- **A thriving place:** Helping communities and businesses to thrive through greener ways of living and working.
- **Nature positive:** Halting and reversing nature loss so that nature is more abundant.
- **Carbon negative:** Going beyond Net Zero so that the National Park absorbs more carbon than it emits.

Whilst not forming part of the statutory development plan, the National Park Partnership Plan is used as a material consideration in the determination of planning applications and will also guide and inform the preparation of the new Local Development Plan.

In turn the Local Development Plan for the National Park is an important tool to help deliver the four statutory National Park aims (as set out in the National Parks (Scotland) Act 2000) as being: In turn the Local Development Plan for the National Park is an important tool to help deliver the four statutory National Park aims (as set out in the National Parks (Scotland) Act 2000). These are:

- To conserve and enhance the natural and cultural heritage of the area
- To promote sustainable use of the natural resources of the area
- To promote understanding and enjoyment (including enjoyment in the form of recreation) of the special qualities of the area by the public
- To promote sustainable economic and social development of the area’s communities

These aims are to be pursued collectively however, if there is conflict between the first aim and any of the others, greater weight must be given to the first aim (section 9.6 of the National Parks (Scotland) Act).

Local Place Plans

Local Place Plans are governed by a Circular ([Circular 1/2022: Local Place Plans](#)), offering guidance for both communities and planning authorities on the preparation, submission and registration of Local Place Plans. Once registered by the planning authority, these plans carry legal weight, necessitating their consideration in the formulation of the Local Development Plan. In line with our commitment to community engagement, we have long supported communities in preparing their own Community Action Plans and in July 2022 we formally invited communities to prepare Local Place Plans, a legal obligation. However, many communities have prepared plans prior to this date. Ahead of our new Local Development Plan, we have been actively supporting more communities in their plan preparation.

As of Spring 2025, we have registered eleven Local Place Plans for the following communities:

- Callander
- Luss and Arden
- Arrochar, Tarbet and Ardlui
- Drymen
- Balquhidder, Lochearnhead and Strathyre
- St. Fillans
- Strathfillan
- Gartmore
- Kilmaronock
- Lochgoil
- Strathard

Regional Spatial Strategy

The Planning (Scotland) Act 2019 introduced a new requirement for the creation of a Regional Spatial Strategy, which identifies long-term spatial development needs within specific areas. While Regional Spatial Strategies are not included in the statutory development plan, they will inform future National Planning Frameworks and Local Development Plans. The part of the Planning Act that requires Regional Spatial Strategies has not yet come into force however, the National Park Partnership Plan 2024 – 2029 is anticipated to serve as the Regional Spatial Strategy for the National Park.

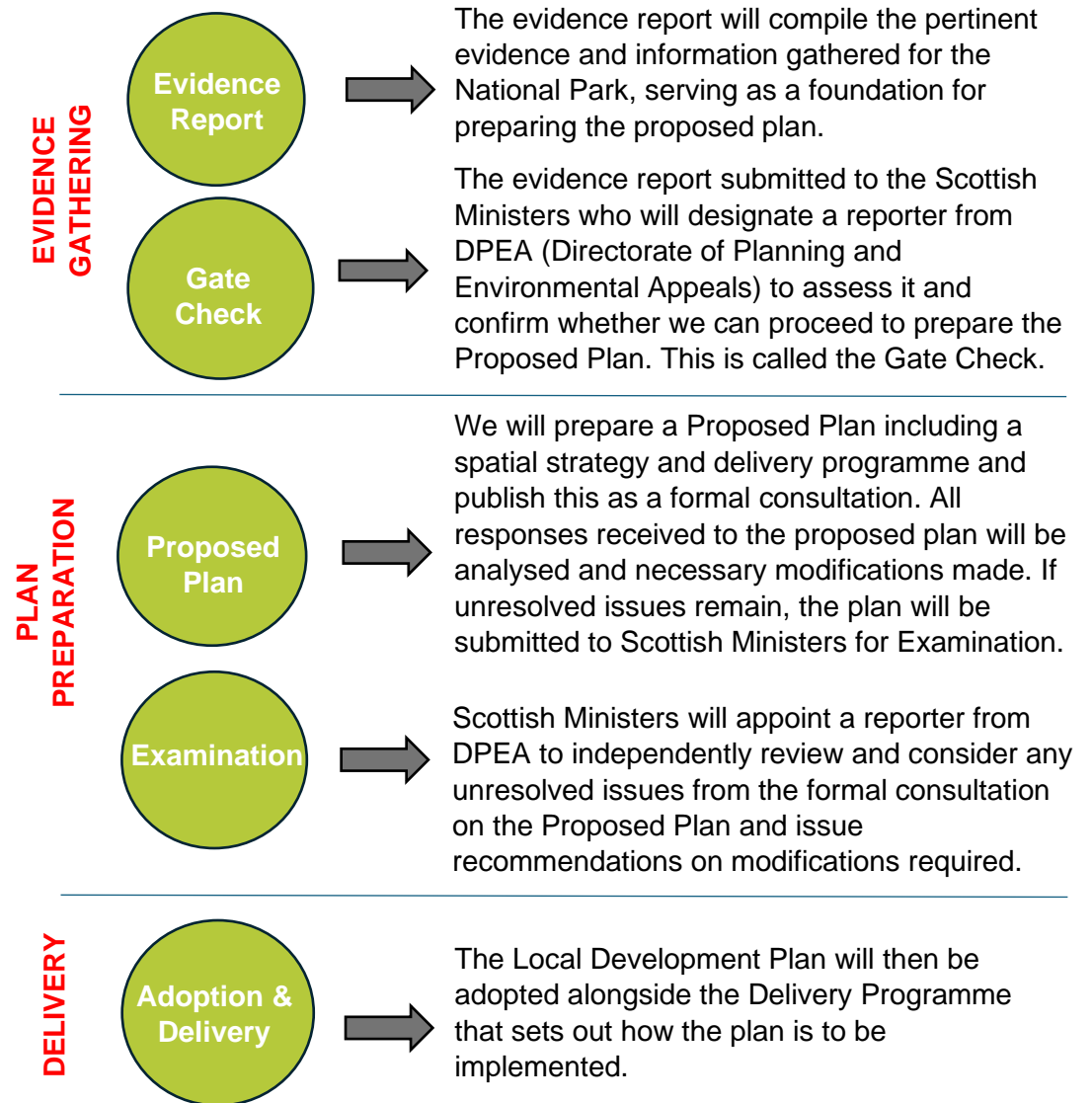
Preparing the new Local Development Plan

In 2025, our primary focus is on reviewing and enhancing our evidence base to compile our Evidence Report for Gate Check submission to the Scottish Government. Gate Check is the stage in which our evidence base is assessed before initiating the development of the new proposed plan. Simultaneously, our annual monitoring has continued, which will contribute to the evidence base of the next Plan.

Our ongoing commitment extends to supporting communities in their efforts to prepare Local Place Plans to ensure they are taken into consideration in the preparation of both the Evidence Report and the new Proposed Plan going forward.

It is important to emphasise that this document provides a high-level overview of the Local Development Plan preparation process and anticipated dates for key milestones. These will be continuously reviewed and updated it as we progress through the stages of the plan preparation, on an annual basis or bi-annually once further confirmation of timescales or engagement opportunities is available.

The process to prepare a Local Development Plan



Local Development Plan Updated Timeline 2025 - 2027

Since the publication of the previous Development Plan Scheme in April 2024, there have been several significant updates to the timeline for preparing the Local Development Plan. These adjustments ensure a more robust and inclusive approach to the preparation of the Local Development Plan, allowing additional time for meaningful engagement and thorough review.

The revised timeline is outlined on the next page of this report.

There have been notable changes to specific stages of the process, as outlined below:

Evidence Report – Drafting and Engagement:

In the previous Development Plan Scheme, the drafting and engagement on the Evidence Report was scheduled between April and December 2024. This has now been revised, with the updated timeline for this stage running from January to June 2025.

A key component of this stage is public and stakeholder engagement, which will now take place between April and June 2025.

Board Approval of the Evidence Report:

Initially scheduled for between October and December 2024, the target timeframe for presenting the finalised Evidence Report to the National Park Board for approval has been revised to September 2025. This allows sufficient time to incorporate feedback gathered during the engagement process.

Gate Check Submission to Scottish Government:

Following Board approval, the Evidence Report and accompanying documentation will be submitted to the Scottish Government for the Gate Check Assessment. This step was originally planned for between January and March 2025. The revised timeline now schedules this submission for October to December 2025.

Call for Ideas and Sites:

This is a crucial early stage in the preparation of the Local Development Plan, providing an opportunity for stakeholders, landowners, and the wider community to suggest potential development sites and put forward ideas for consideration. Originally scheduled for January to March 2025, this stage has now been rescheduled to take place between October and December 2025.

Site Assessment:

The Site Assessment process is a core element in shaping the Proposed Plan. A detailed methodology has been developed and will be submitted to the Scottish Government as part of the Gate Check. Once the Evidence Report has been approved, the Planning Authority will begin assessing the submitted sites. Previously expected to occur between October 2024 and March 2025, the assessment phase is now due to take place between July and December 2025.

Drafting of the Proposed Plan:

Drafting the Proposed Local Development Plan is anticipated to be the most time-intensive stage. In the original timeline, this was set to begin in October 2024 and conclude by December 2025. However, in light of the updated timelines for earlier stages, this phase has now been revised to take place between July 2025 and September 2026. This extended period allows for a more comprehensive and informed drafting process.

Publication of the Proposed Plan for Consultation:

Following the drafting of the Proposed Local Development Plan, the next step is to publish the plan and initiate a formal period of public consultation. This stage is critical, providing communities, stakeholders, and visitors with the opportunity to contribute to the final version of the Plan. Originally scheduled for January to March 2026, this stage has now been rescheduled to take place between October and December 2026.

Submission for Examination by the Scottish Government:

After the consultation period concludes, the Plan will be reviewed and finalised, incorporating all relevant feedback. The finalised Plan will then be submitted to the Scottish Government for an independent Examination. This stage was previously scheduled for July to September 2026 but has now been rescheduled to take place between April and June 2027.

Adoption and Publication of the Local Development Plan:

Once the Examination process is complete and any required modifications have been made, the Local Development Plan will move toward formal adoption and publication. This milestone was originally expected between October and December 2026 but is now planned for July to September 2027.

Delivery Programme:

Alongside the preparation of the Local Development Plan, the Planning Authority is also required to produce a Delivery Programme that outlines how the policies and proposals within the Plan will be implemented. The publication of the updated Delivery Programme, aligned with the adopted Local Development Plan, has been revised from January to March 2027 to October to December 2027.

Revised Local Development Plan Timeline 2025 - 2027

CORE MILESTONES	Q4 Jan- Mar 2025	Q1 Apr- Jun 2025	Q2 Jul- Sept 2025	Q3 Oct- Dec 2025	Q4 Jan- Mar 2026	Q1 Apr- Jun 2026	Q2 Jul- Sept 2026	Q3 Oct- Dec 2026	Q4 Jan- Mar 2027	Q1 Apr – Jun 2027	Q2 July – Sept 2027	Q3 Oct – Dec 2027
Evidence Gathering & Stakeholder Engagement												
SEA Baseline, Scoping, Draft and Submit												
Draft Evidence Report & Board Approval												
Gate Check (assumed 3 months)												
Call for Ideas and Sites stage												
Site Assessments												
Draft Proposed Plan												
Publish Proposed Plan for consultation												
Modifications to Proposed Plan												
Examination												
Adoption & Publication												
Publish Delivery Programme												

Participation Statement and Engagement

As well as the timetable for preparing the new Local Development Plan, this Development Plan Scheme seeks to provide details on engagement and consultation opportunities and methods throughout the process to prepare the Plan. This is to ensure that stakeholders are aware of when consultation is likely to take place and what form it will take.

Since the publication of the previous Development Plan Scheme, we have further developed our engagement strategy for the preparation of the Evidence Report. The following pages in this chapter set out detailed information on the engagement process for the Evidence Report, along with high-level insights into how we intend to approach engagement throughout the wider Development Plan process.

[Previous Engagement](#)

The National Park Authority has adopted the new National Park Partnership Plan for 2024–2029 (NPPP) in 2024. The development of this Plan was informed by extensive consultation, using a variety of methods including online surveys, in-person interviews, discussions with key agencies, and meetings with community groups. A particular emphasis was placed on ensuring that the voices of children and young people, along with other key stakeholder groups, were heard. The wide range of views gathered throughout this process is reflected in the final NPPP ([linked here](#)).

In shaping our engagement strategy for the forthcoming Local Development Plan, we have built upon the strong foundation established through the NPPP consultation. We recognise the considerable input already received from individuals and communities who shared their insights on key issues affecting the National Park. This has provided a robust evidence base to guide our approach.

Through this work, we have developed a strong understanding of the priorities and concerns within The Park, as well as the perspectives of many of the groups identified in the Planning (Scotland) Act 2019 – including the general public, children and young people, key agencies, community councils, and disabled people. However, we acknowledge that further engagement is needed with additional stakeholder groups to ensure their views are captured, and to support more focused consultation on specific matters related to local development planning.

Our ongoing support for the preparation of Local Place Plans has continued to strengthen relationships with communities across the Park. We have been actively engaging with and assisting those creating or implementing their plans. To date, eleven Local Place Plans have been formally registered within the National Park, with several more at various stages of development. These conversations have been invaluable and will play a vital role in shaping our Evidence Report and informing the next Local Development Plan. Throughout this process, the Local Development Plan team has worked closely with communities, gaining a rich understanding of local perspectives.

As we progress with the Evidence Report and begin preparing the new Local Development Plan, we remain committed to maintaining an open dialogue with all sectors of the community. We will continue to place particular focus on encouraging participation from groups who are typically harder to reach, including young people, families with children, and those in full-time employment. Social media has proven to be an especially effective tool in supporting this aim, complementing more traditional forms of engagement.

Overriding Principles of the Consultation and Engagement Plan

Following the publication of the previous Development Plan Scheme, we have taken steps to enhance and evolve our engagement approach.

Our approach is guided by the Scottish Government's published guidance on [Effective Community Engagement in Local Development Plans](#).

The guidance identifies five key levels of engagement:

- **Inform**
- **Consult**
- **Involve**
- **Collaborate**
- **Empower**

We are aligning our engagement activities with these levels and will provide further detail on how each will be applied at key project milestones.

In addition, our strategy is shaped by the National Standards for Community Engagement (VOICE). These seven standards form the foundation of our engagement practice, ensuring that our consultation is inclusive, meaningful, and tailored to the needs of different stakeholder groups. By using these principles, we aim to foster an approach that supports clear communication, active participation, and effective collaboration throughout the plan-making process.

The diagram below illustrates the seven standards of engagement that we will be adhering to throughout the development of the Evidence Report and Local Development Plan 2:



Who will we engage with?

We are required by the Town and Country Planning (Scotland) Act 1997 (as amended), to engage and consult with specific stakeholder groups, alongside internal National Park Authority services, community councils, external organisations, and the general public.

These specific groups include:

- Children and young people
- Gypsies and Travellers
- Disabled People

As part of the development of the detailed engagement strategy we will be focussing specific engagement activities on the groups detailed above and within the Planning (Scotland) Act 2019, however, we will actively encourage anyone with an interest in development and land use, community development, climate change and nature recovery to get involved in the next Local Development Plan. Participation will be open to everyone including individuals, our communities, businesses, landowners, local authority partners, the Key Agencies, and the development sector.

How will we engage?

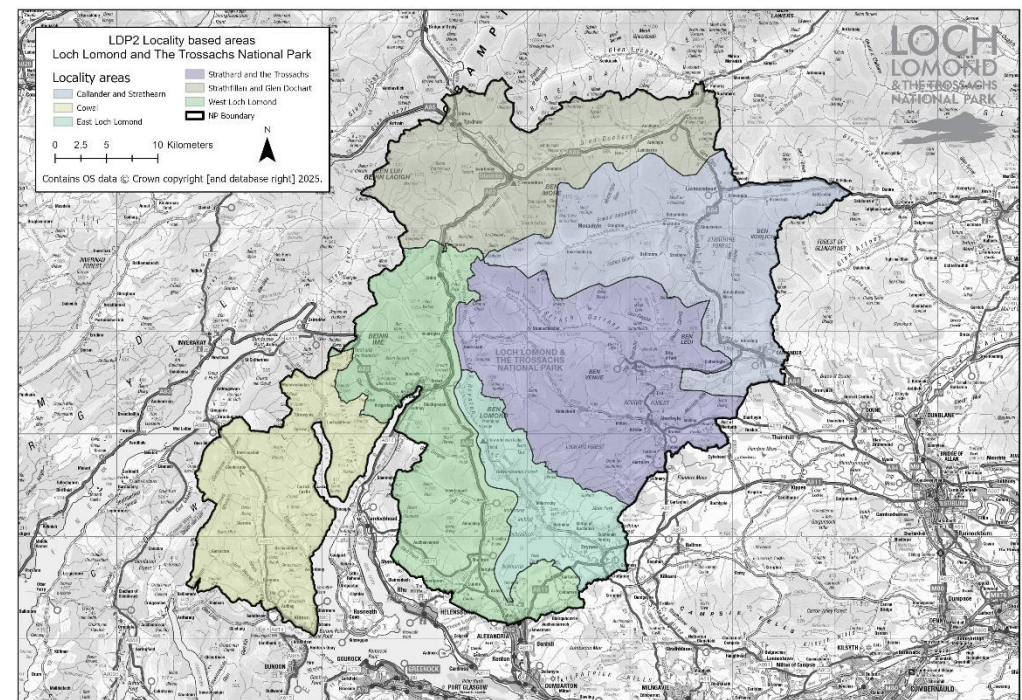
Our overarching aim is to make it as easy and accessible as possible for anyone with an interest to take part in the preparation of the Evidence Report and the next Local Development Plan. To support an inclusive approach, we plan to offer a range of engagement opportunities, allowing individuals and groups to contribute at a level that suits them – whether that's providing in-depth feedback or simply sharing brief input.

The National Park Authority will have an eight week focused engagement phase within the Evidence Gathering process, which is a key opportunity for the public and stakeholders to contribute their views and insights. In this phase the Evidence Report will be made publicly available on the Authority's website. A user-friendly survey will accompany the report, enabling individuals, organisations, and community groups to submit comments, feedback, and observations directly. This online platform will be accessible throughout the engagement period, offering a flexible and inclusive means for participation.

To complement the online materials, the Authority will host a series of in-person workshops at various locations across the National Park. These workshops are designed to provide a more interactive, place-based engagement experience for residents, local communities, and individuals with a particular interest in specific areas of the Park. A total of six workshops are planned, each focusing on a different geographic area to ensure comprehensive coverage. These events will provide participants with the opportunity to:

- Learn more about the Evidence Report and the overall planning process;
- Understand how their Local Place Plans and previous input have influenced the work to date;
- Discuss local issues, priorities, and aspirations in a collaborative setting; and
- Ask questions and engage directly with members of the planning team.

The map below provides an indication of where each of the six in person workshops will be held. The intention is to host an event within each of the localities shown below. Invitations will be issued to relevant individuals and groups to inform them of the scheduled in-person events.



In addition to the area-focused workshops, the Authority will also host a Park-wide online workshop. This session is aimed at capturing broader, strategic views from individuals or groups who may not be aligned with a specific location within the Park but who nevertheless have an interest in its future development. The date and time of this online session will be publicised in advance on our website and via targeted emails to ensure wide participation.

Recognising the importance of inclusive and representative engagement, the National Park Authority will also carry out targeted outreach to specific groups identified in the Town and Country Planning (Scotland) Act 1997 (as amended). These groups include children and young people, disabled people, and Gypsies and Travellers. The Authority is committed to designing bespoke engagement activities that are appropriate, accessible, and sensitive to the unique needs and preferences of each group. This may involve working in partnership with relevant organisations, using alternative formats or communication channels, and creating supportive environments for participation.

Through this multi-faceted approach, the National Park Authority aims to ensure that the engagement process is robust, inclusive, and meaningful. All feedback received during this phase will be carefully considered and will help inform the next stages of the planning process.

The final stage of this phase of the process involves submitting the complete Evidence Report to the Scottish Government for the Gate Check Assessment. This report will include all relevant data, analysis, and a comprehensive record of the engagement activities undertaken, demonstrating how feedback from communities and stakeholders has informed the development of the report. The Gate Check is a formal assessment that ensures the Evidence Report is robust and fit for purpose before progressing to the next stage of the Local Development Plan process.

Once the Evidence Report has been submitted to the Scottish Government for the Gate Check Assessment, the National Park Authority will launch a Call for Sites and Ideas. While the exact launch date is yet to be confirmed, regular updates will be provided through our website, social media channels, and mailing list to ensure everyone has the opportunity to take part.

The purpose of the Call for Sites and Ideas is to invite individuals, community groups, landowners, developers, and other stakeholders to propose specific sites within the National Park that they believe should be considered for future development, protection, or other land use designations. These submissions will help inform the land allocation process for the next Local Development Plan, ensuring it reflects a wide range of local knowledge, aspirations, and opportunities.

When will we engage?

The following timetable outlines the proposed timings, methods, and target audiences for the engagement activities planned in 2025. Key dates will be shared on our website and social media channels, and invitations will be issued to relevant individuals and groups to inform them of the scheduled in-person events.

2025 Engagement for the Evidence Report			
Month	Planned Engagement Activity	Audience	Purpose
January	Drafting of the Evidence Report and therefore engagement is with external data holders and the four local authorities with the purpose of obtaining all the required information.	Key Agencies and other statutory authorities	Consult, Collaborate
February	Drafting of the Evidence Report and therefore engagement is with external data holders and the four local authorities with the purpose of obtaining all the required information.	Key Agencies and other statutory authorities	Consult, Collaborate
March	The first draft of the relevant sections of the Evidence Report complete, and engagement involves sending the drafts of specific sections to the key agencies as outlined in the Scottish Governments' Local Development Planning Guidance. The purpose of this is to gather initial views and ensure Key Agency feedback is incorporated at an early stage of topic paper development.	Key Agencies and other statutory authorities	Inform, Consult, Collaborate
April	The National Park Authority will analyse the feedback that has been received as part of the initial consultation with the Key Agencies and other statutory bodies and seek to update the Evidence Report based on the information and advice provided.	N/A	Collaborate

May	<p>The National Park Authority will commence the eight-week public engagement phase. During this time, the relevant sections of the Evidence Report will be published on the Authority's website, accompanied by a survey to enable all interested parties to provide feedback.</p> <p>In addition to the online materials and survey, a series of in-person stakeholder workshops will be held across the National Park. These workshops, by invitation, will be aimed at key stakeholder or representatives of community organisations. Six workshops are planned, each focusing on a different geographic area, offering communities a further opportunity to share their views on the evidence and baseline information identified and also to help the understanding of how their Local Place Plans have been considered to date.</p>	The public at large, community councils and wider community members, residents, children and young people, disabled people and the Gypsy and Traveller community.	Inform, Consult, Involve, Collaborate,
June	<p>An additional online workshop will be held during the public engagement period to gather views from a Park-wide perspective and from individuals who may not have a specific interest in a particular locality.</p> <p>During this phase, the National Park Authority will also undertake targeted engagement with specific groups identified in the Town and Country Planning (Scotland) Act 1997 (as amended), including children and young people, disabled people, and Gypsies and Travellers. Engagement activities will be tailored to suit the needs of each group, ensuring an inclusive and accessible approach to participation.</p> <p>The Local Development Plan team will be available during this time to meet with any interested parties to gather their views and answer any questions relating to the Evidence Report or overarching process.</p>		
July	<p>Following the engagement period, all responses and feedback will be thoroughly analysed to identify key themes, concerns, and suggestions. Where appropriate, the Evidence Report will be revised to incorporate the views and insights gathered through the engagement sessions. This ensures that the final report accurately reflects the perspectives of communities, stakeholders, and other interested parties.</p>	N/A	Collaborate
August			

September	The complete Evidence Report will first be submitted to the National Park Authority Board for approval. Following the Board's endorsement, the report will then be forwarded to the Scottish Government to undergo the Gate Check assessment.	Board Members	Inform, Consult
October	Following the submission of the Evidence Report to the Scottish Government for the Gate Check assessment, the National Park Authority will launch a Call for Sites and Ideas, which is expected to remain open for a three-month period. While the exact start date has yet to be confirmed, regular updates will be shared via our website, social media channels, and mailing list. During this stage of the process, the National Park Authority will also begin work on drafting the Proposed Local Development Plan. As the preparation of the Plan is a significant undertaking expected to take at least a year, only the initial elements will be developed at this time. This early drafting will proceed in parallel with the Gate Check assessment and the Call for Sites and Ideas, with further progress dependent on the outcomes of both.	Public at large, specific stakeholder groups. infrastructure providers, the local authorities, community councils, community groups, housing developers, landowners	Inform, Involve, Collaborate
November			
December			

Next Steps of the Engagement Process

The next stages of the engagement process are still to be defined, and the next Development Plan Scheme will go into more detail about the timelines and methods of engagement for the proposed Local Development Plan. The current timeline indicates that the draft Local Development Plan will be published for public consultation in October of 2026 and the engagement will run until December 2026. The table below outlines the key next stages in the Development Plan process, along with indicative timelines and how we plan to engage with communities and stakeholders at each stage.

TIMESCALES	STAGE of PLAN PREPARATION	WHO WE MAY ENGAGE WITH (not exhaustive)	METHODS WE MAY USE	AIM
DEVELOPMENT OF PROPOSED PLAN				
July 2025 – September 2026	Plan preparation – including associated assessments	Public at large, specific stakeholder groups, key agencies, infrastructure providers, the local authorities, board members, community councils, community groups, housing developers, landowners, local authorities	Workshops and interactive events specific to stakeholder groups, Emails, In person and online meetings to gather views, Surveys, Local Place Plans, Previous National Park Partnership Plan consultation results	Inform, Involve, Collaborate
October 2026 – December 2026	Consultation on draft proposed plan	Public at large, specific stakeholder groups, infrastructure provides, the local authorities, board members, community councils, community groups,	Advertisement, physical copies made available, Neighbour Notification social media Interactive Events & Information Meetings - online & in person,	Consult

		housing developers, landowners, local authorities	Online consultation	
EXAMINATION				
April 2027 – June 2027 Q4 Jan – March 2027	Submit proposed plan to Scottish Ministers	No requirement to engage at this stage	Submit to Scottish Ministers	Inform
	Examination period including modification of the plan	Members of the public – objectors	Advertisement in local newspaper and libraries Notify those who made representations during consultation	Inform
ADOPTION				
July 2027 – September 2027	Adopt proposed Plan	Members of the Public Scottish Members People who commented on Proposed Plan	Submit to Scottish Ministers Publicise online and in local newspaper Notify those who commented on the plan	Inform
October 2027 – December 2027	Prepare and publish delivery programme	Scottish Ministers Members of the Public	Email, workshops and interactive events, online and in person meetings, LDP pages on National Park Website and hard copies to be made available.	Collaborate

Contact Us

We hold a Local Development Plan database which is a list of all individuals and organisations that want to be kept up to date on Local Development Plan process and delivery. In the last few years, we have sent a newsletter keeping people up to date on our Action Programme (this is about site and place delivery) and our Monitoring Reports and Audits. As we move into the next stage the LivePark newsletter will be used to inform people of the engagement we are undertaking and information on Local Place Plans.

If you are interested in receiving our newsletter and being kept informed of the various stage of the preparation of all our Local Development Plan, then please contact us through any method below:

Email: LocalDevPlan2@lochlomond-trossachs.org

Telephone: 01389 722600 and ask for Development Planning team.

Write: National Park Authority Headquarters, Carrochan Road, Balloch, G83 8EG

You can also keep up to date on our various social media feeds

Facebook - <https://www.facebook.com/lomondtrossachs>

Instagram - <https://www.instagram.com/lomondtrossachs/#>

YouTube - <https://www.youtube.com/user/LomondTrossachs>

Linkedin - <https://www.linkedin.com/company/lomondtrossachs/>