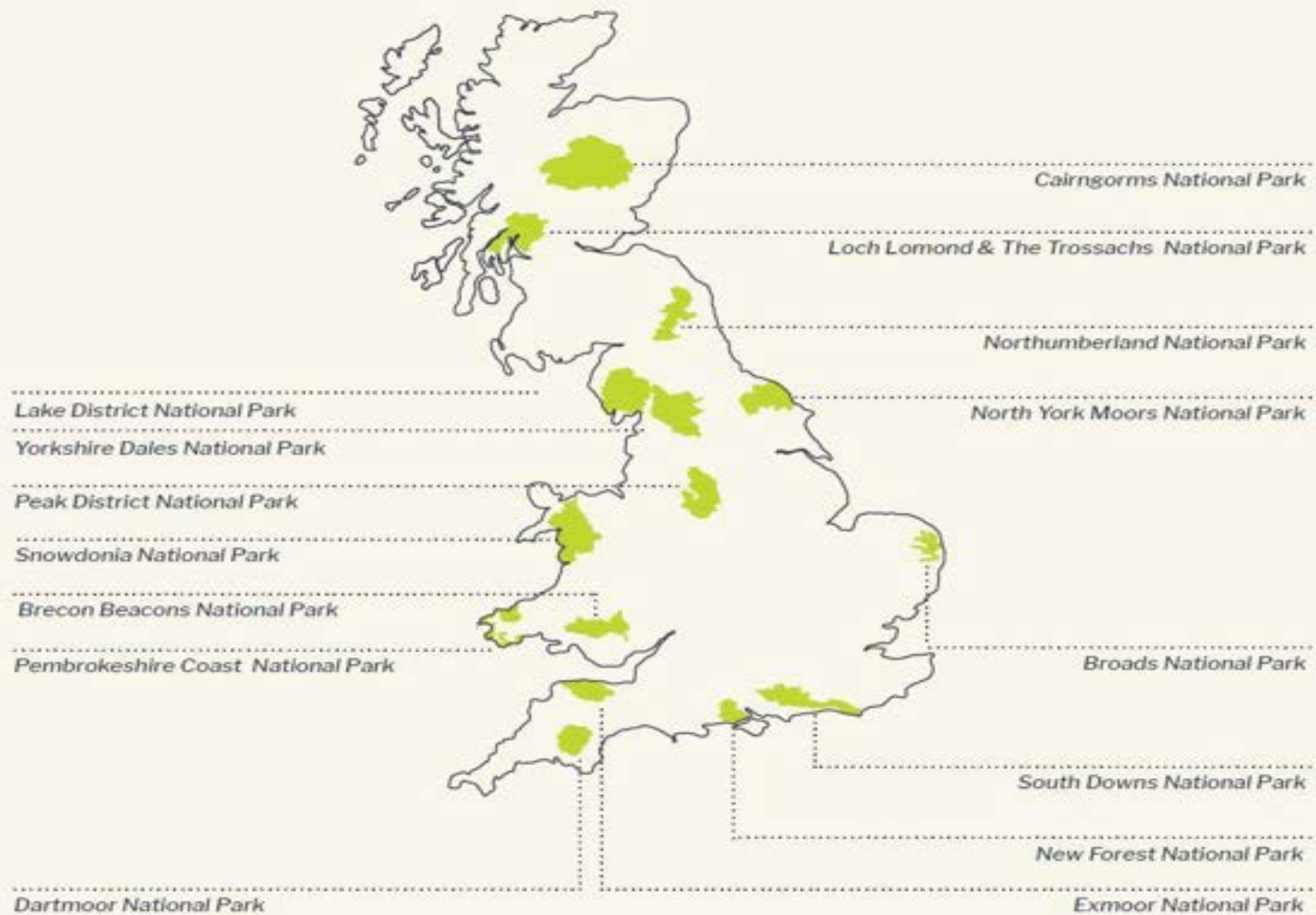


UK National Parks: Restoring Nature for People and Planet

Gordon Watson - Chief Executive
Loch Lomond and The Trossachs National Park



Lake District
National Park



IUCN Category 5 Protected Landscapes

“areas where the interaction of people and nature over time has produced an area of distinct character with significant ecological, biological, cultural and scenic value and where safeguarding the integrity of this interaction is vital to protecting and sustaining the area and its associated nature conservation and other values”.



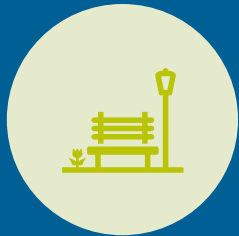
National Park Aims - Scotland



Conserve and enhance the **natural and cultural** heritage of the area



Promote sustainable use of the **natural resources** of the area



Promote **understanding and enjoyment** (including recreation) of the special qualities of area by the public



Promote **sustainable economic and social** development of the area's communities

Loch Lomond and The Trossachs National Park

- Scotland's first National Park in 2002
- Approximately 15,600 population
- More than 50% of Scotland's population live within an hour's travel
- 4.8 Million visitors - £580M economy
- Great Trossachs Forest National Nature Reserves amongst largest
- Loch Lomond - Largest fresh water body in Great Britain
- Over 300 national priority species



Climate Change Impacts In National Parks

- More extreme weather events - storms and rainfall
- Lengthier dry spells leading to water scarcity and heightened wildfire risk
- Rainfall saturated hills and mountains causing more frequent and dramatic landslides impacting on infrastructure
- More frequent and dramatic flood events
- Warming temperatures bringing new pests and diseases
- Warming water temperatures are impacting on our native wild fish stocks and water quality

LOCH
LOMOND
& THE TROSSACHS
NATIONAL PARK



Why is Our Nature in Trouble?

- We need to expand and regenerate our native woodlands
- Over 50,000 hectares of peatlands may currently be degraded, releasing greenhouse gases, and contributing towards climate warming
- Invasive non-native species remain widespread
- Approximately 20% of Designated Sites, such as Sites of Special Scientific Interest, are in an unfavourable condition
- Approximately 50% of water bodies may not be in good ecological condition



It is no longer enough just to protect what is here now.

We must proactively and vigorously re-build and restore a richer nature that will continue to yield us and our world benefits for long into the future.



Scottish Government expectations on National Parks



‘Scottish Ministers wish to see Scotland’s National Parks as places that will actively demonstrate nature recovery and the transformational change needed in our approach to land-use, providing leadership and showcasing a just transition to net zero in Scotland.’



Scottish Government
Riaghaltas na h-Alba

What is the National Park Partnership Plan?

It sets out a long term vision for the future of Loch Lomond & The Trossachs National Park and the steps we will take together over the next five years to achieve it.

OUR VISION FOR 2045

By 2045 the National Park is a thriving place that is nature positive and carbon negative.



What Role Are UK National Parks Playing?

- 1. Carbon Sequestration:** Peatlands, woodlands, and forests within the National Parks act as significant carbon sinks.
- 2. Peatlands,** for example, store carbon in their soil, preventing it from being released into the atmosphere.
- 3. Biodiversity :** protecting and expanding habitats and a wide range of species, supporting ecosystem health and resilience against climate change.
- 4. Flood Management:** improved management of wetlands and floodplains, help manage floodwaters, reducing the risk of flooding in surrounding areas.



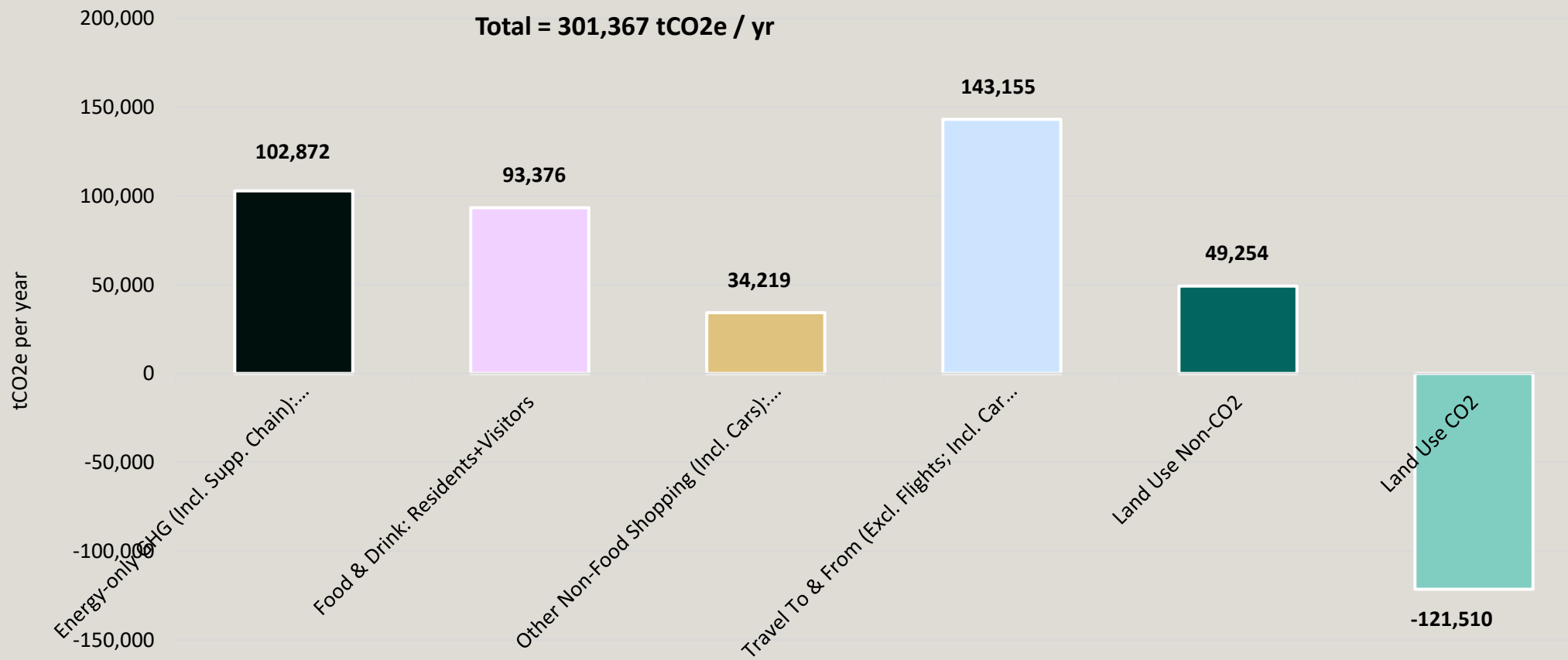
LOCH
LOMOND
& THE TROSSACHS
NATIONAL PARK

What Role Are UK National Parks Playing?

- 1. Sustainable Tourism:** National Parks promote green tourism and sustainable travel, encouraging visitors to minimize their carbon footprint.
- 2. Education:** increase awareness by the public on the impacts of climate change.
- 3. Community and Business Engagement:** working with local communities to support more sustainable living, climate resilience and a collective approach to climate action³.



2019 baseline emissions



Six categories for emission reduction targets



Energy-only GHG

Residents, visitors, industry
(incl. supply chain)



Travel to/from the area

Visitors
(excl. flights, incl. car manufacturing)



Food & drink

Residents, visitors



Land-based non-CO₂ (e.g.
livestock, fertiliser use)



Non-food shopping

Residents + visitors
(incl. car purchases)



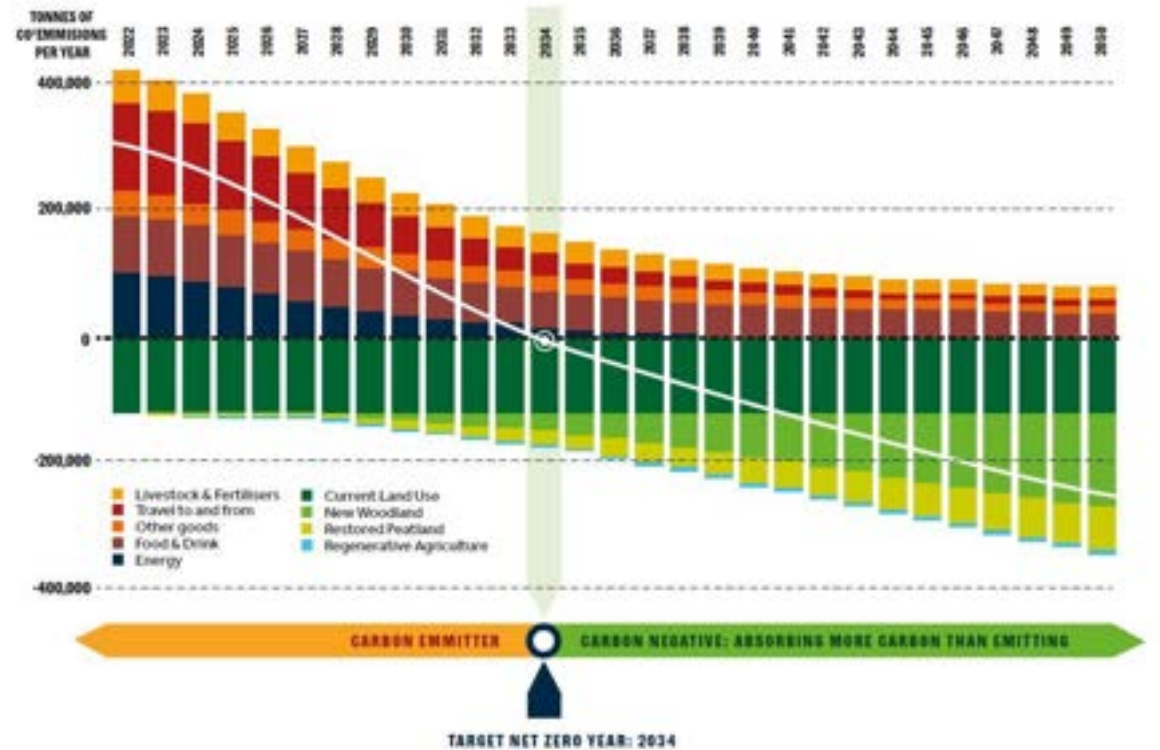
Land-based CO₂
(e.g. sequestration, soil
degradation)

How Are We Using Our Carbon Models?



- 1. National Park Partnership Plans:** Informing policies, initiatives and targets for reducing emissions and sequestering carbon
- 2. Net Zero Places:** Allowing each National Park to set credible next zero dates with clear pathways to deliver
- 3. National and Local Leadership:** Positions National Parks as leaders nationally and locally in driving change and working with partners and communities
- 4. Increasing Understanding of the Value of Nature:** Allows us to demonstrate that investing in nature is critical to the future wellbeing and resilience of our society.

FIGURE 3: 'CLIMATE WITH NATURE' PATHWAY TO NET ZERO AND BEYOND IN THE NATIONAL PARK



UK National Park Commitments

- 1. Carbon Emissions:** to drive action to halve carbon emissions within their landscapes by 2030, all reach net zero by 2040 and become significant net carbon sinks by 2050
- 2. Natural Carbon Sinks:** going from 11.5 million tonnes of joint emissions in 2022, to 'soaking up' roughly 3.5 million tonnes instead by 2050
- 3. Nature Restoration:** Transform 610,000 Hectares of land into nature friendly areas, restore damaged peatlands, encourage regenerative agriculture and create new woodlands
- 4. Sustainability:** Promote sustainable travel, energy use reduction, local food sourcing and resilient communities.



Thank
You
谢谢

